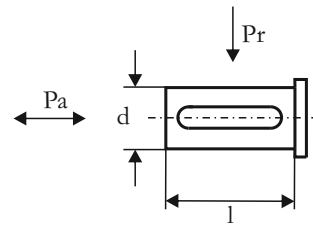


a	b	c	e	f	s	i	h	p	m	l	d	t	u	M
85	105	15	110	135	8,5	68	102	170	135	40	20	22,5	6	M6

	63 SL	71 S-L	80 S-L	90 S	90 L
k	349	365	382	399	424
k1	405	485	502	524	549



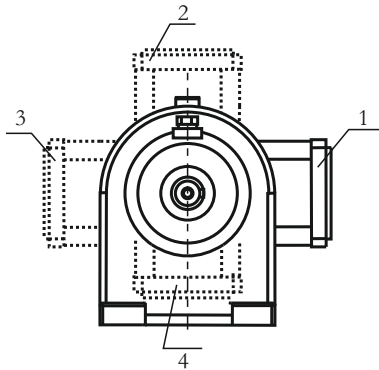
Yük
Load

Çıkış Devir Sayısı n2
Output speed n2

	0-15	30-50	15-30	50-100	100-140
Pr (N)	1300	1200	1000	900	800
Pa(N)	500	450	400	350	300

Redüktöre gelen radyal ve eksenel yükler
Radial and axial loads on the gearbox

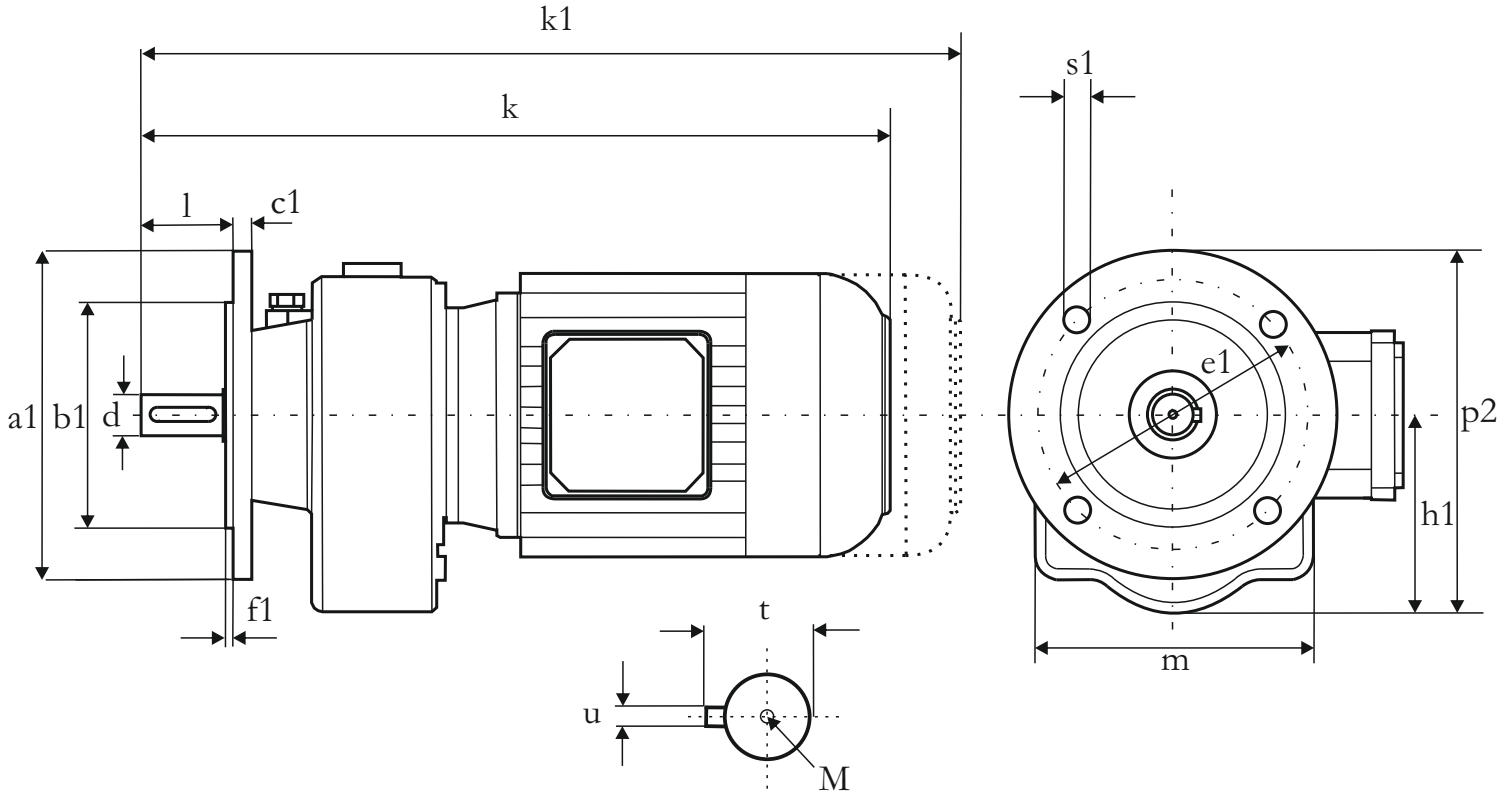
Klemens Kutusu Bağlantı Pozisyonları
Mounting position of terminal box



T₂ max(Nm) : 100

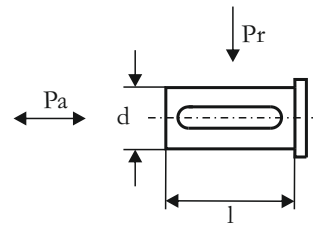
MİL ÇAP TOLERANSLARI
0-50 mm ISO K6
50mm üstü ISO J6
k1 Frenli redüktörlere aittir.

Shaft diameter tolerances
0-50 mm ISO K6
Up 50 mm ISO J6
Dimensions k1 is for motors with brake

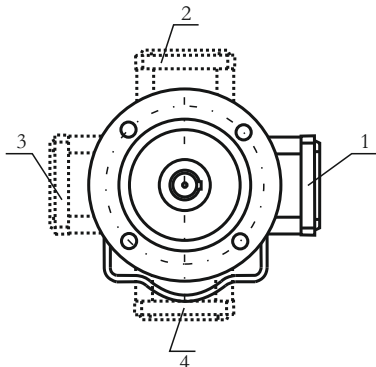


a1	b1	c1	e1	f1	s1	h1	p2	m	l	d	t	u	M
160	110	10	130	3,5	9	98	178	135	40	20	22,5	6	M6

	63 S-L	71 S-L	80 S-L	90 S	90 L
k	349	365	382	399	424
k1	405	485	502	524	549



Klemens Kutusu Bağlantı Pozisyonları
Mounting position of terminal box



$T_2 \max(\text{Nm}) : 100$

Yük
Load

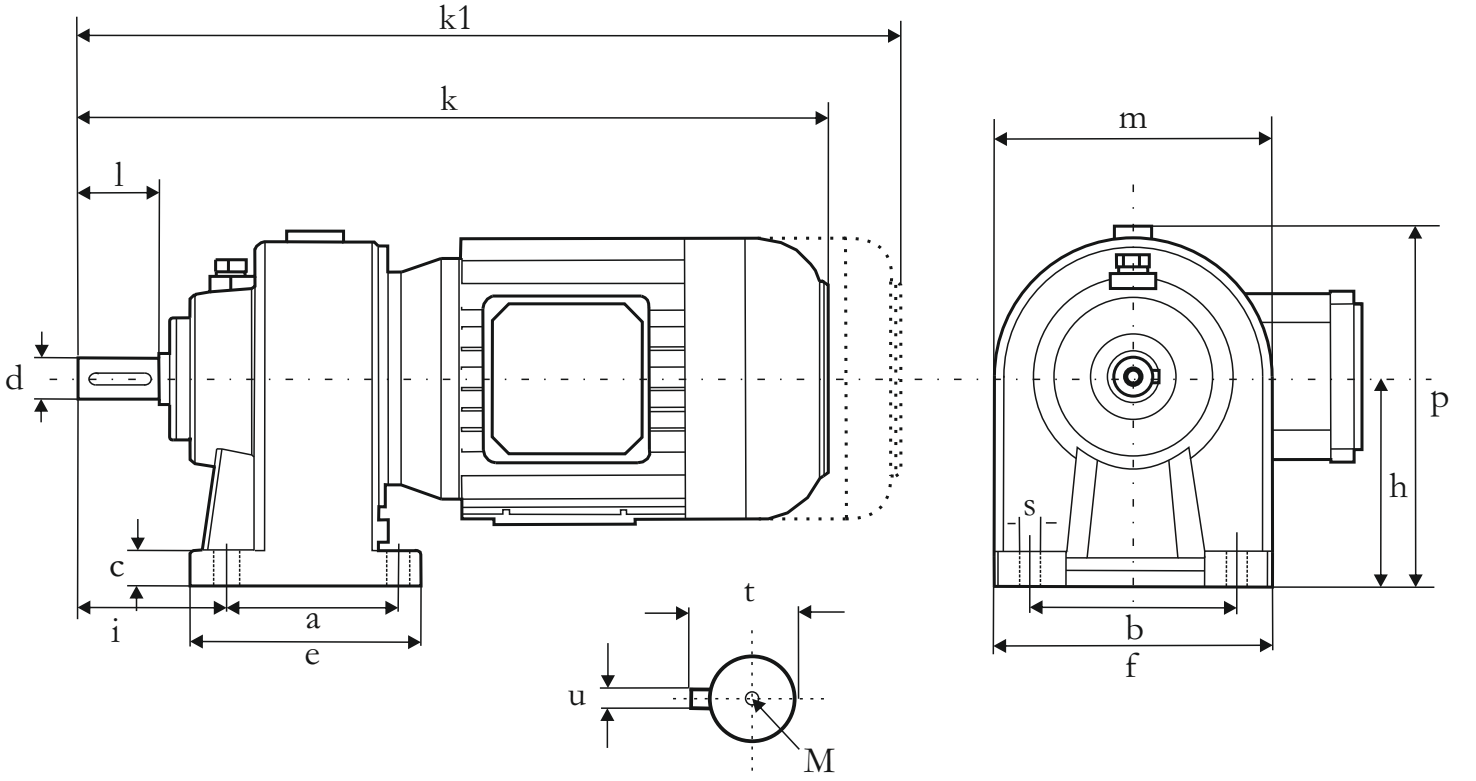
Çıkış Devir Sayısı n_2
Output speed n_2

	0-15	30-50	15-30	50-100	100-140
P_r (N)	1300	1200	1000	900	800
P_a (N)	500	450	400	350	300

Redüktöre gelen radyal ve eksenel yükler
Radial and axial loads on the gearbox

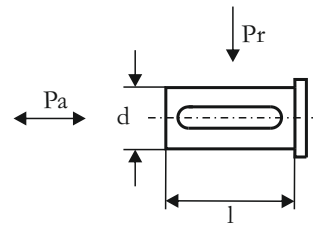
MİL ÇAP TOLERANSLARI
0-50 mm ISO K6
50mm üstü ISO J6
k1 Frenli redüktörlere aittir.

Shaft diameter tolerances
0-50 mm ISO K6
Up 50 mm ISO J6
Dimensions k1 is for motors with brake

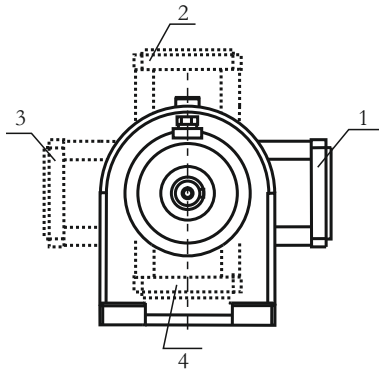


a	b	c	e	f	s	i	h	p	m	l	d	t	u	M
100	130	18	125	155	10,5	74	125	200	150	50	25	28	8	M8

	71 S-L	80 S-L	90 S	90 L	100 L
k	399	416	433	458	491
k1	519	536	558	583	626



Klemens Kutusu Bağlantı Pozisyonları
Mounting position of terminal box



$T_2 \text{ max(Nm)} : 200$

Yük
Load

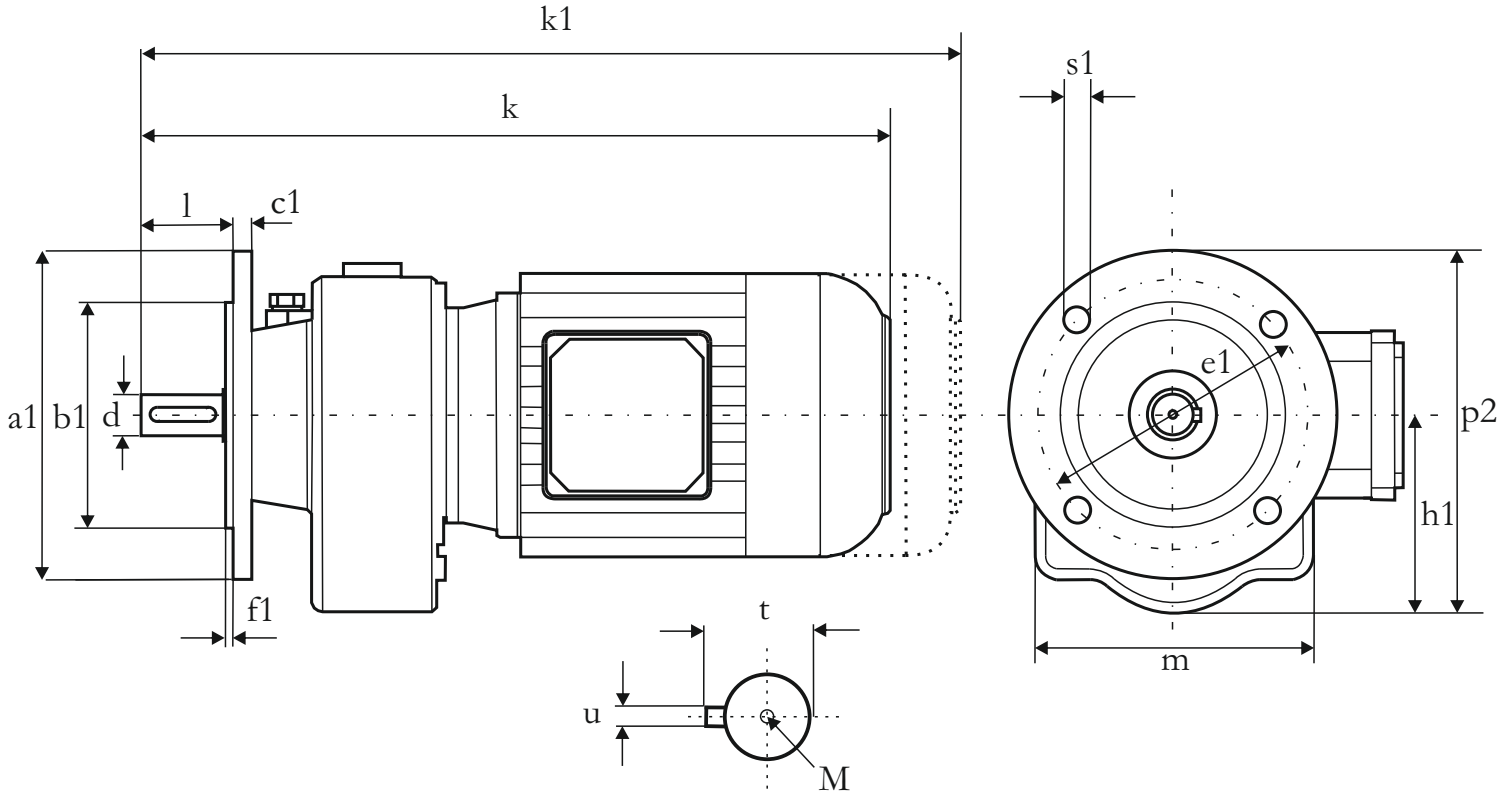
Çıkış Devir Sayısı n_2
Output speed n_2

	0-15	30-50	15-30	50-100	100-140
P_r (N)	2100	1900	1700	1500	1300
P_a (N)	850	750	700	650	600

Redüktöre gelen radyal ve eksenel yükler
Radial and axial loads on the gearbox

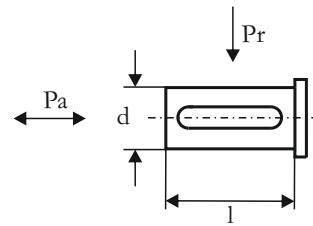
MİL ÇAP TOLERANSLARI
0-50 mm ISO K6
50mm üstü ISO J6
k1 Frenli redüktörlere aittir.

Shaft diameter tolerances
0-50 mm ISO K6
Up 50 mm ISO J6
Dimensions k1 is for motors with brake

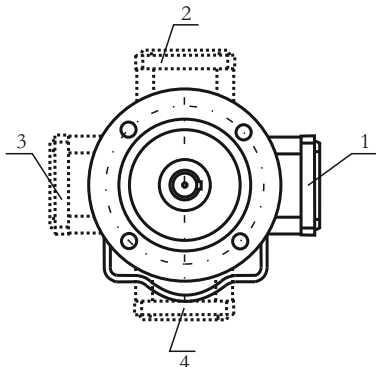


a1	b1	c1	e1	f1	s1	h1	p2	m	l	d	t	u	M
160	110	12	130	3,5	9	123	203	150	50	25	28	8	M8

	71 S-L	80 S-L	90 S	90 L	100 S-L
k	399	416	433	458	491
k1	519	536	558	583	626



Klemens Kutusu Bağlantı Pozisyonları
Mounting position of terminal box



$T_2 \text{ max(Nm)} : 200$

Yük
Load

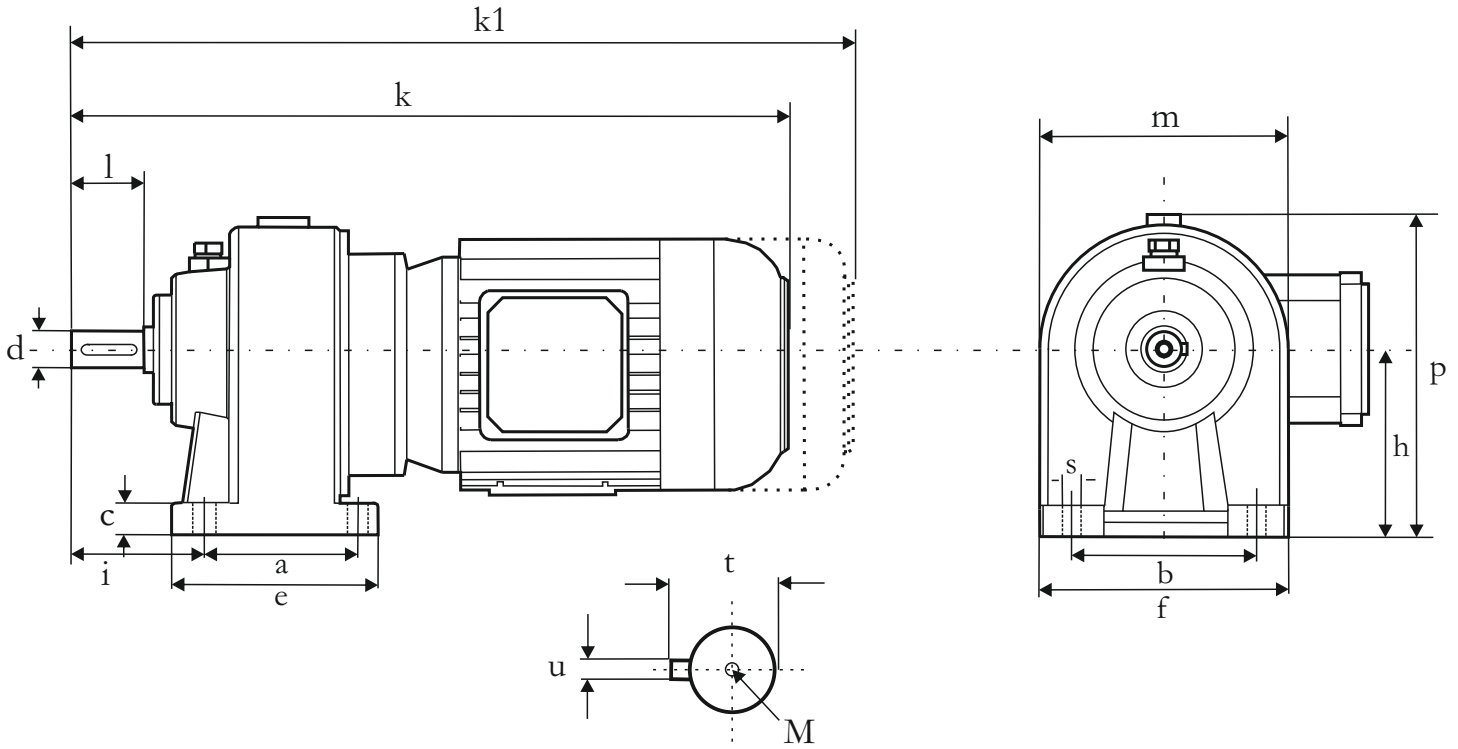
Çıkış Devir Sayısı n_2
Output speed n_2

	0-15	30-50	15-30	50-100	100-140
P_r (N)	2100	1900	1700	1500	1300
P_a (N)	850	750	700	650	600

Redüktöre gelen radyal ve eksenel yükler
Radial and axial loads on the gearbox

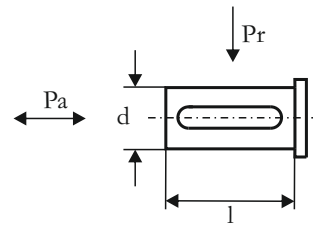
MİL ÇAP TOLERANSLARI
0-50 mm ISO K6
50mm üstü ISO J6
k1 Frenli redüktörlere aittir.

Shaft diameter tolerances
0-50 mm ISO K6
Up 50 mm ISO J6
Dimensions k1 is for motors with brake



a	b	c	e	f	s	i	h	p	m	l	d	t	u	M
100	130	18	125	155	10,5	74	125	200	150	50	25	28	8	M8

	63 SL	71 S-L	80 SL
k	334	453	468
k1	446	573	588



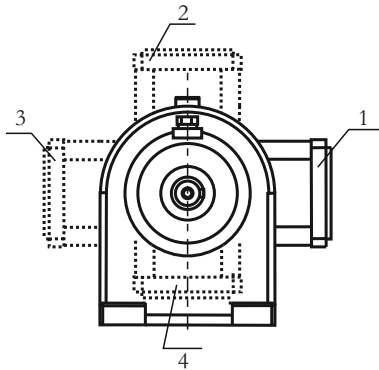
Yük
Load

Çıkış Devir Sayısı n2
Output speed n2

	0-15	30-50	15-30	50-100	100-140
Pr (N)	2100	1900	1700	1500	1300
Pa(N)	850	750	700	650	600

Redüktöre gelen radyal ve eksenel yükler
Radial and axial loads on the gearbox

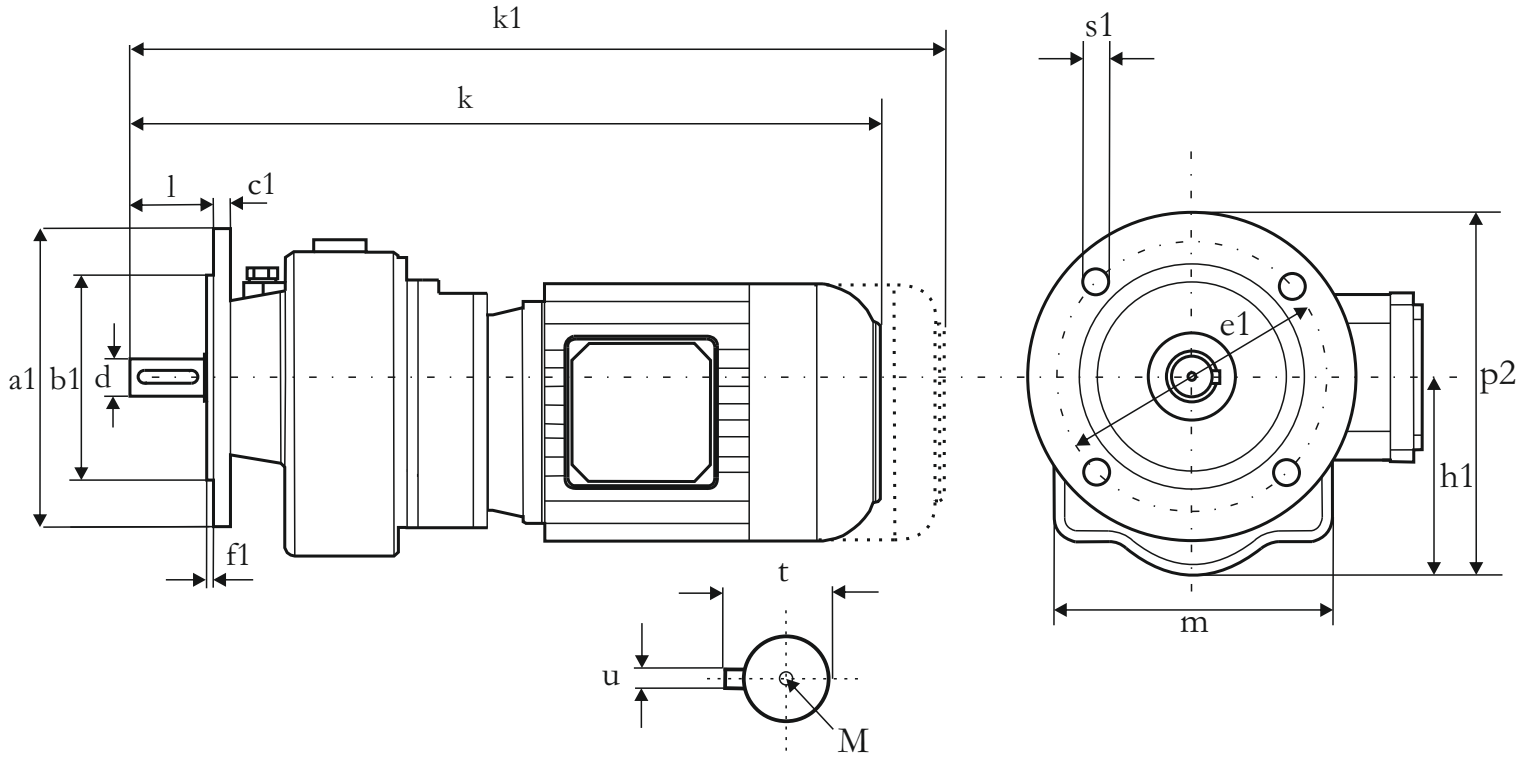
Klemens Kutusu Bağlantı Pozisyonları
Mounting position of terminal box



T₂ max(Nm) : 200

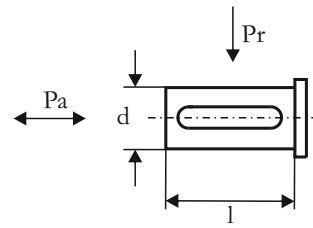
MİL ÇAP TOLERANSLARI
0-50 mm ISO K6
50mm üstü ISO J6
k1 Frenli redüktörlere aittir.

Shaft diameter tolerances
0-50 mm ISO K6
Up 50 mm ISO J6
Dimensions k1 is for motors with brake

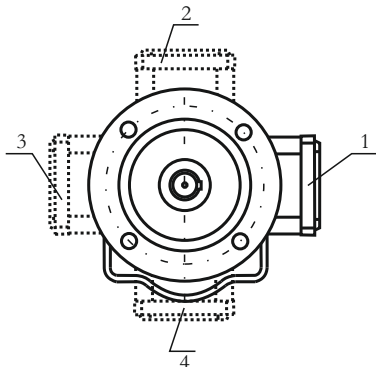


a1	b1	c1	e1	f1	s1	h1	p2	m	l	d	t	u	M
160	110	12	130	3,5	9	123	203	150	50	25	28	8	M8

	63 SL	71 S-L	80 S-L
k	334	453	468
k1	446	573	588



Klemens Kutusu Bağlantı Pozisyonları
Mounting position of terminal box



$T_2 \max(\text{Nm}) : 200$

Yük
Load

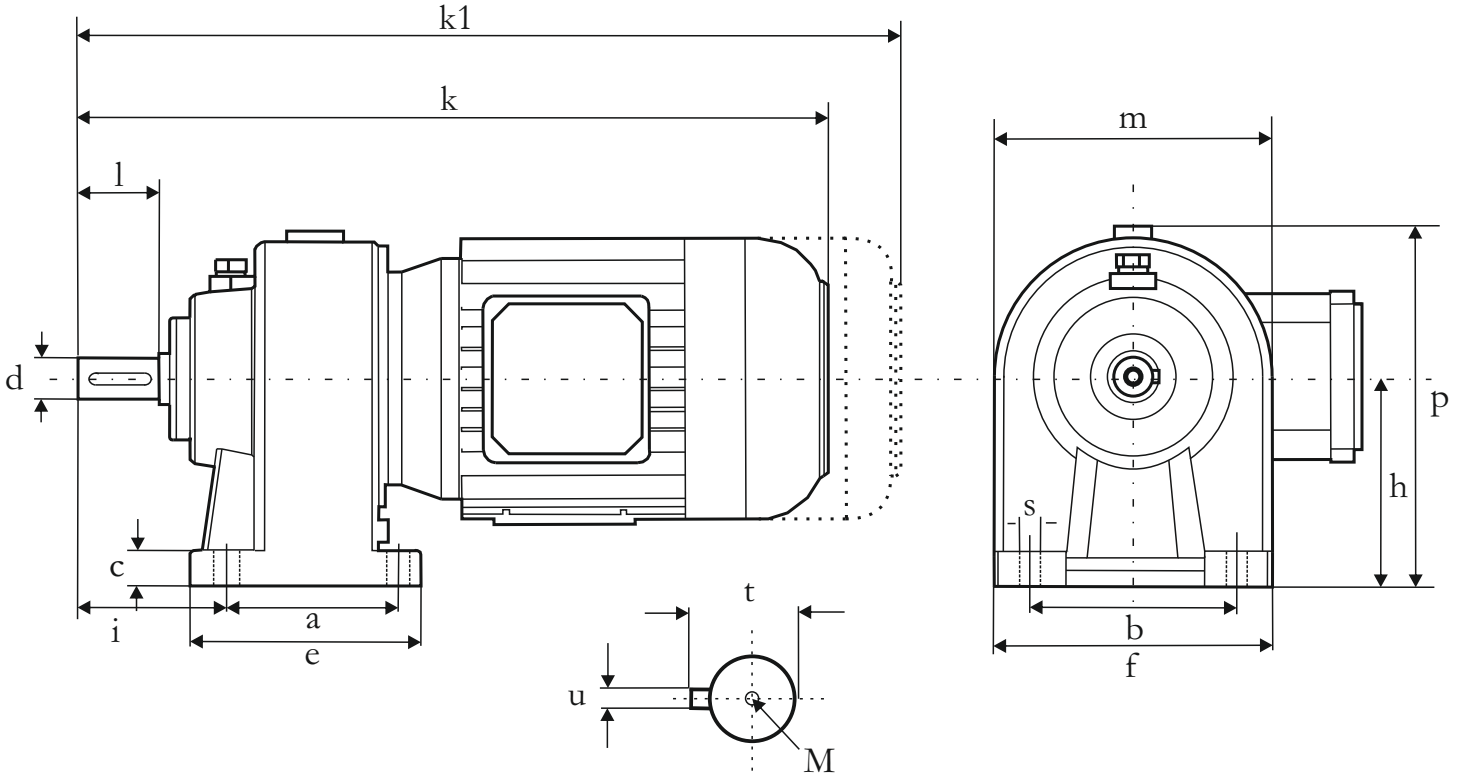
Çıkış Devir Sayısı n_2
Output speed n_2

	0-15	30-50	15-30	50-100	100-140
P_r (N)	2100	1900	1700	1500	1300
P_a (N)	850	750	700	650	600

Redüktöre gelen radyal ve eksenel yükler
Radial and axial loads on the gearbox

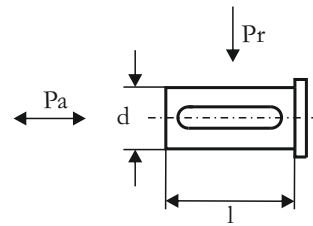
MİL ÇAP TOLERANSLARI
0-50 mm ISO K6
50mm üstü ISO J6
k1 Frenli redüktörlere aittir.

Shaft diameter tolerances
0-50 mm ISO K6
Up 50 mm ISO J6
Dimensions k1 is for motors with brake

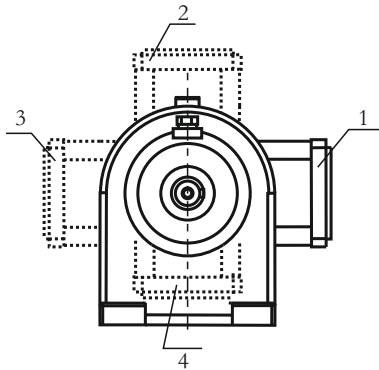


a	b	c	e	f	s	i	h	p	m	l	d	t	u	M
85	185	20	125	210	13	86	155	240	170	70	35	38	10	M10

	80 SL	90 S	90 L	100 L	112 M
k	452	469	494	527	541
k1	572	594	619	662	676



Klemens Kutusu Bağlantı Pozisyonları
Mounting position of terminal box



$T_2 \max(\text{Nm}) : 400$

Yük
Load

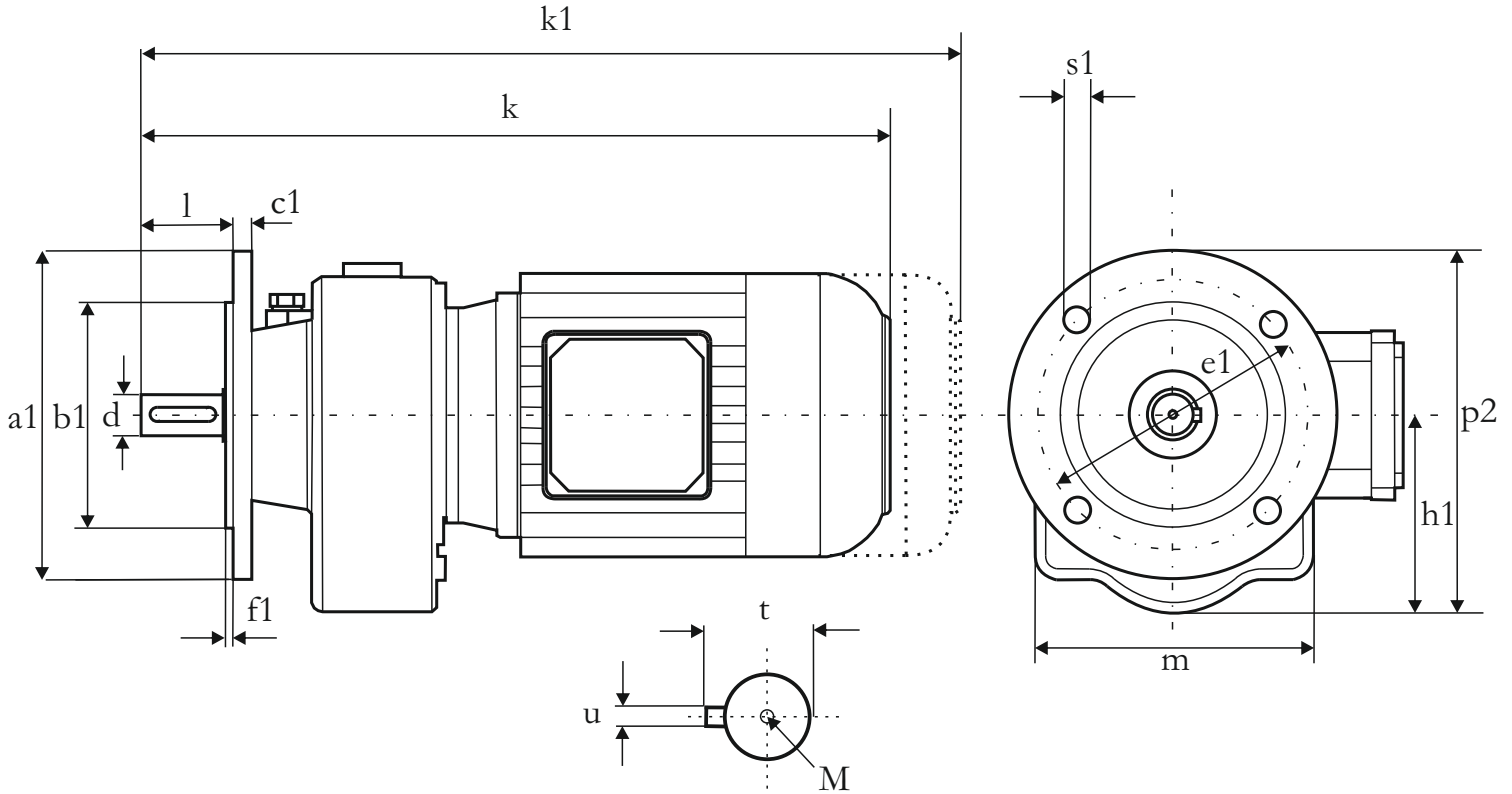
Çıkış Devir Sayısı n_2
Output speed n_2

	0-15	30-50	15-30	50-100	100-140
P_r (N)	3800	3300	3000	2600	2400
P_a (N)	1500	1350	1150	950	850

Redüktöre gelen radyal ve eksenel yükler
Radial and axial loads on the gearbox

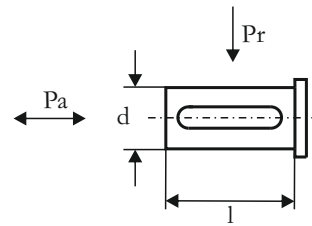
MİL ÇAP TOLERANSLARI
0-50 mm ISO K6
50mm üstü ISO J6
k1 Frenli redüktörlere aittir.

Shaft diameter tolerances
0-50 mm ISO K6
Up 50 mm ISO J6
Dimensions k1 is for motors with brake

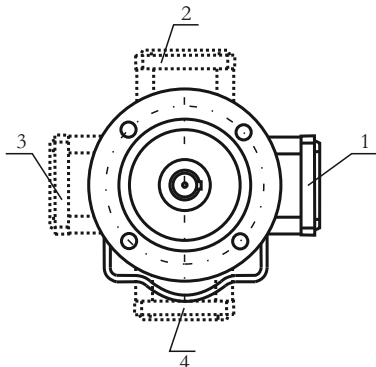


a1	b1	c1	e1	f1	s1	h1	p2	m	l	d	t	u	M
200	130	12	165	3,5	11	153	253	170	70	35	38	10	M10

	80 SL	90 S	90 L	100 L	112 M
k	452	469	494	527	541
k1	572	594	619	662	676



Klemens Kutusu Bağlantı Pozisyonları
Mounting position of terminal box



$T_2 \text{ max(Nm)} : 400$

Yük
Load

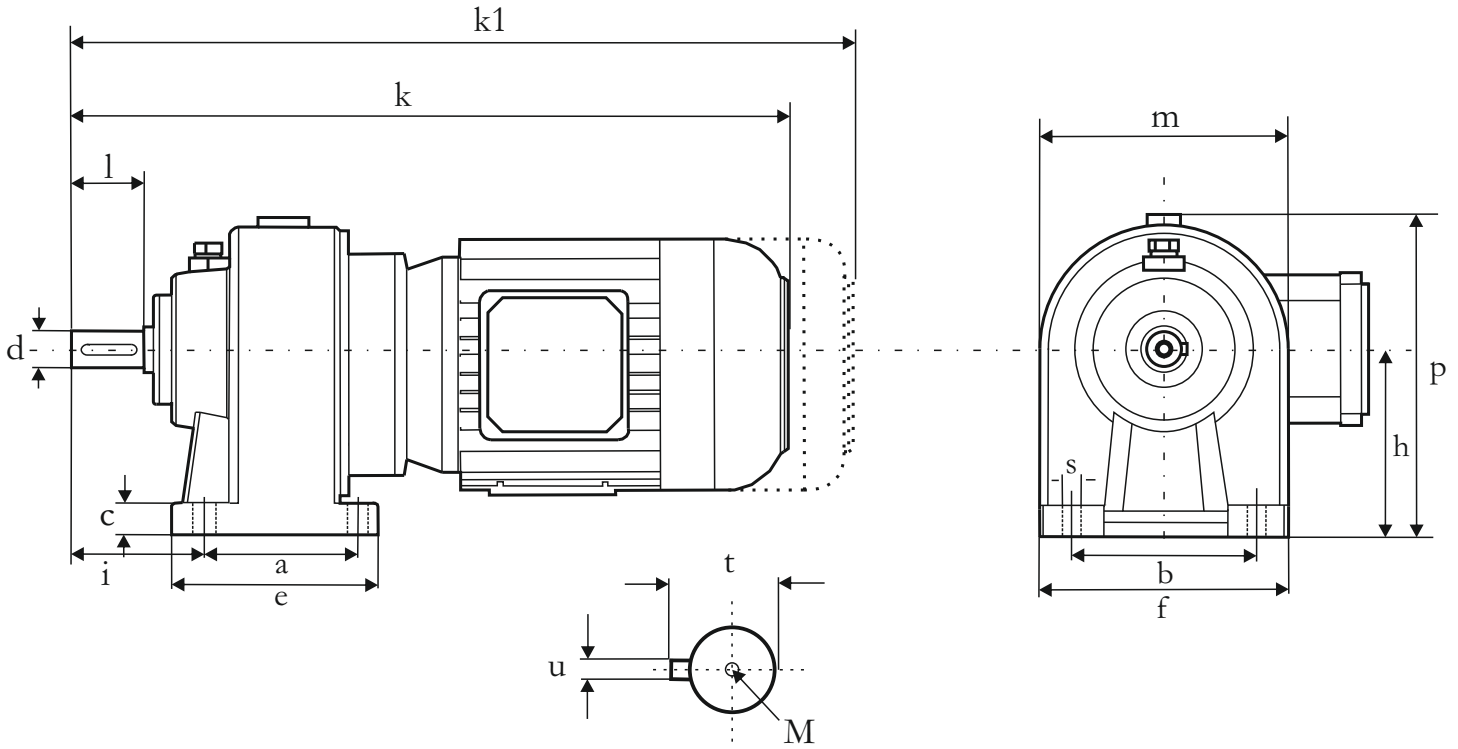
Çıkış Devir Sayısı n_2
Output speed n_2

	0-15	30-50	15-30	50-100	100-140
P_r (N)	3800	3300	3000	2600	2400
P_a (N)	1500	1350	1150	950	850

Redüktöre gelen radyal ve eksenel yükler
Radial and axial loads on the gearbox

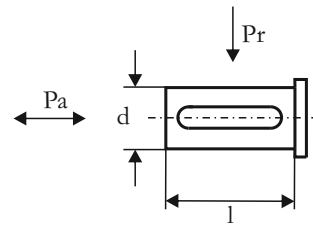
MİL ÇAP TOLERANSLARI
0-50 mm ISO K6
50mm üstü ISO J6
k1 Frenli redüktörlere aittir.

Shaft diameter tolerances
0-50 mm ISO K6
Up 50 mm ISO J6
Dimensions k1 is for motors with brake

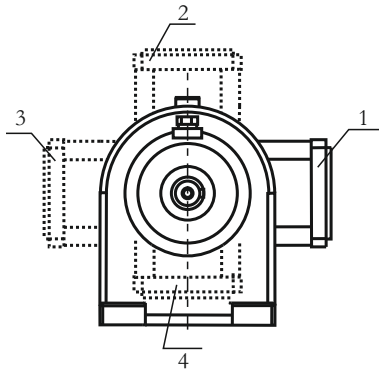


a	b	c	e	f	s	i	h	p	m	l	d	t	u	M
85	185	20	125	210	13	86	155	240	170	70	35	38	10	M10

	63 SL	71 SL	80 SL	90 S	90 L
k	460	479	496	513	538
k1	516	599	616	638	663



Klemens Kutusu Bağlantı Pozisyonları
Mounting position of terminal box



$T_2 \text{ max(Nm)} : 400$

Yük
Load

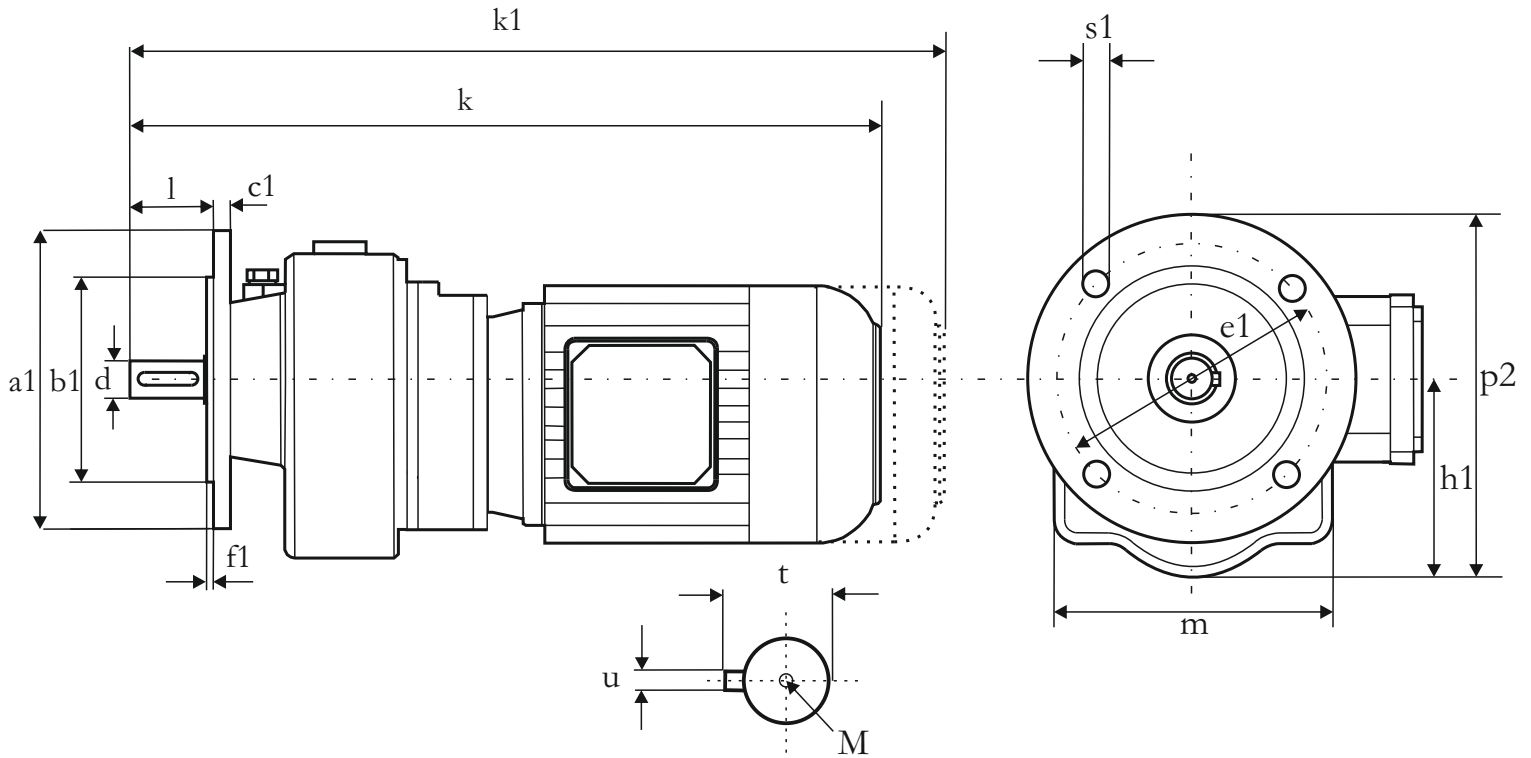
Çıkış Devir Sayısı n_2
Output speed n_2

	0-15	30-50	15-30	50-100	100-140
P_r (N)	3800	3300	3000	2600	2400
P_a (N)	1500	1350	1150	950	850

Redüktöre gelen radyal ve eksenel yükler
Radial and axial loads on the gearbox

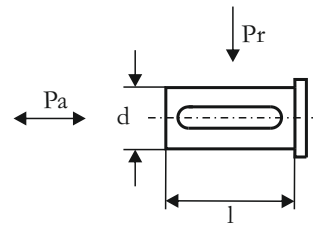
MİL ÇAP TOLERANSLARI
0-50 mm ISO K6
50mm üstü ISO J6
k1 Frenli redüktörlere aittir.

Shaft diameter tolerances
0-50 mm ISO K6
Up 50 mm ISO J6
Dimensions k1 is for motors with brake

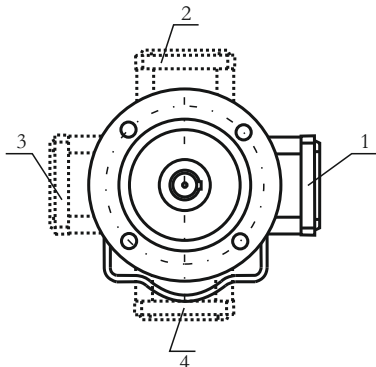


a1	b1	c1	e1	f1	s1	h1	p2	m	l	d	t	u	M
200	130	12	165	3,5	11	153	253	170	70	35	38	10	M10

	63 SL	71 SL	80 SL	90 S	90 L
k	460	479	496	513	538
k1	516	599	616	638	663



Klemens Kutusu Bağlantı Pozisyonları
Mounting position of terminal box



$T_2 \max(\text{Nm}) : 400$

Yük
Load

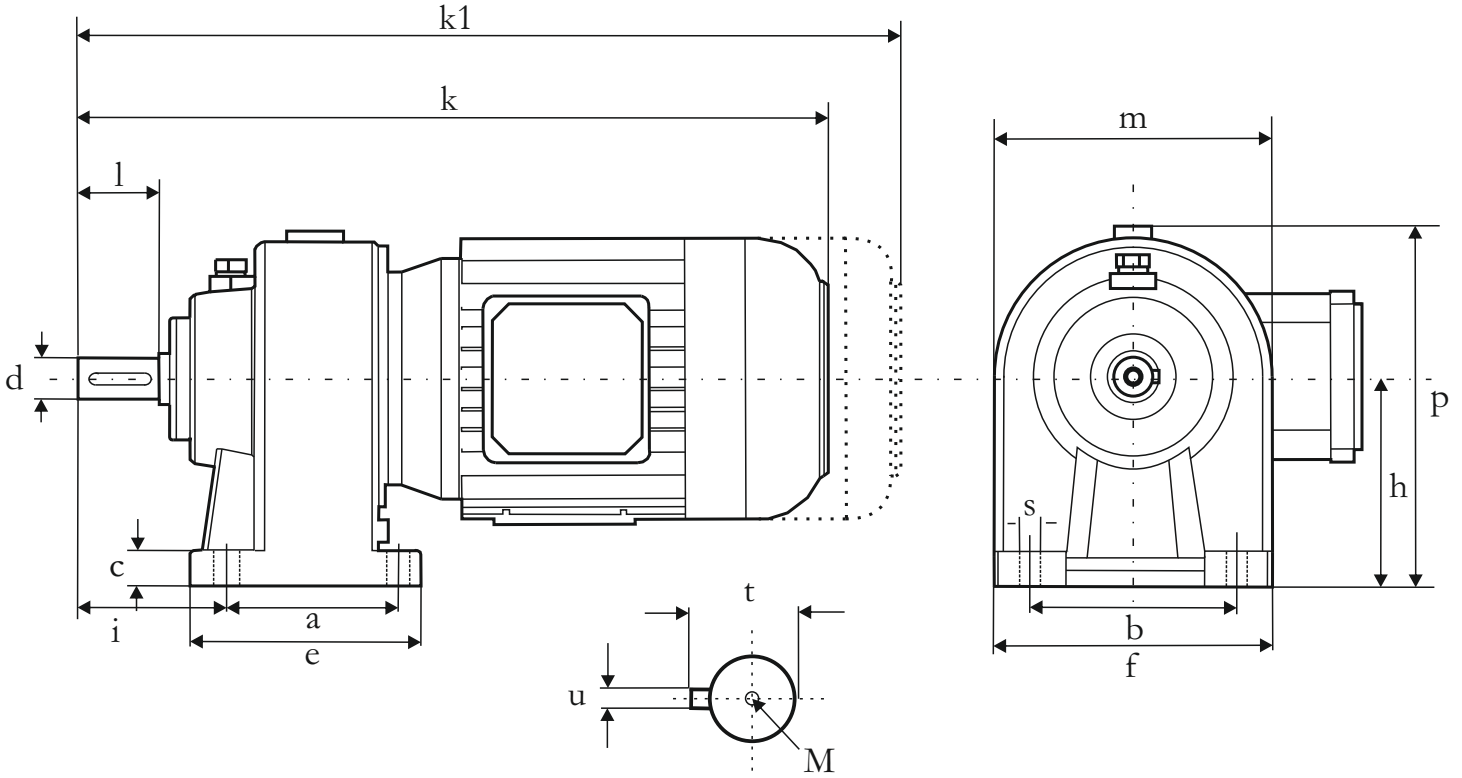
Çıkış Devir Sayısı n_2
Output speed n_2

	0-15	30-50	15-30	50-100	100-140
P_r (N)	3800	3300	3000	2600	2400
P_a (N)	1500	1350	1150	950	850

Redüktöre gelen radyal ve eksenel yükler
Radial and axial loads on the gearbox

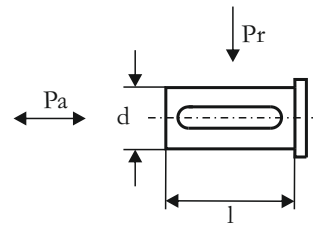
MİL ÇAP TOLERANSLARI
0-50 mm ISO K6
50mm üstü ISO J6
k1 Frenli redüktörlere aittir.

Shaft diameter tolerances
0-50 mm ISO K6
Up 50 mm ISO J6
Dimensions k1 is for motors with brake



a	b	c	e	f	s	i	h	p	m	l	d	t	u	M
134	175	25	165	215	13	120	175	275	200	80	40	43	14	M12

	90 S	90 L	100 L	112 M	132 S	132 M
k	510	525	558	572	619	657
k1	635	650	693	707	764	802



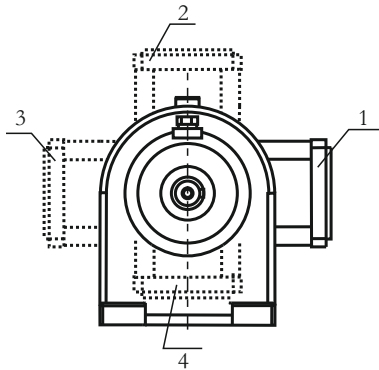
Yük
Load

Çıkış Devir Sayısı n2
Output speed n2

	0-15	30-50	15-30	50-100	100-140
Pr (N)	4200	3800	3400	3000	2400
Pa(N)	1700	1500	1300	1100	900

Redüktöre gelen radyal ve eksenel yükler
Radial and axial loads on the gearbox

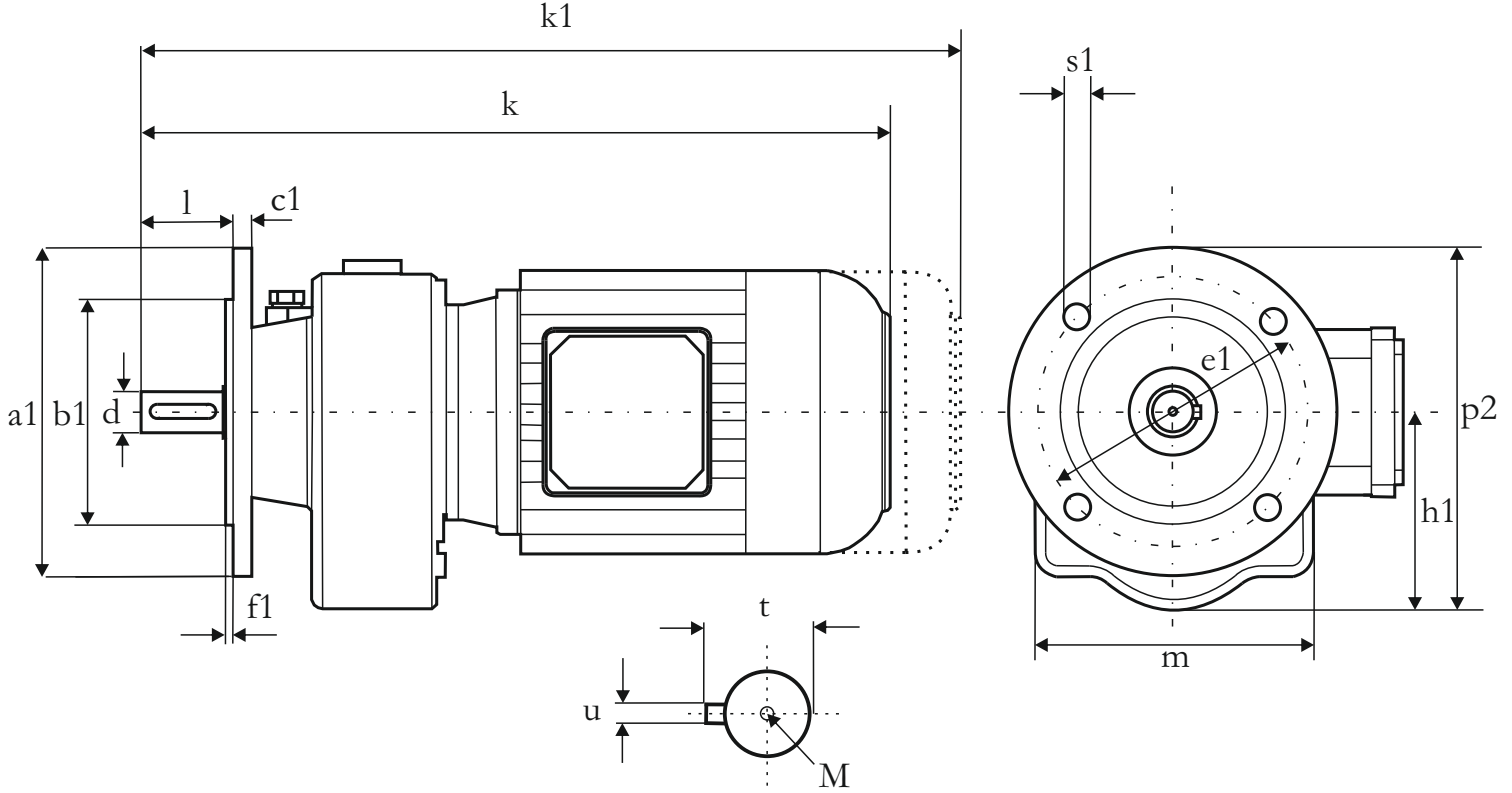
Klemens Kutusu Bağlantı Pozisyonları
Mounting position of terminal box



T₂ max(Nm) : 700

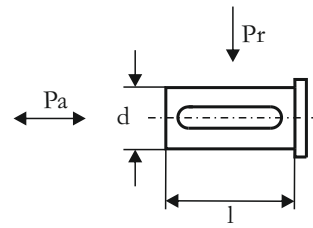
MİL ÇAP TOLERANSLARI
0-50 mm ISO K6
50mm üstü ISO J6
k1 Frenli redüktörlere aittir.

Shaft diameter tolerances
0-50 mm ISO K6
Up 50 mm ISO J6
Dimensions k1 is for motors with brake

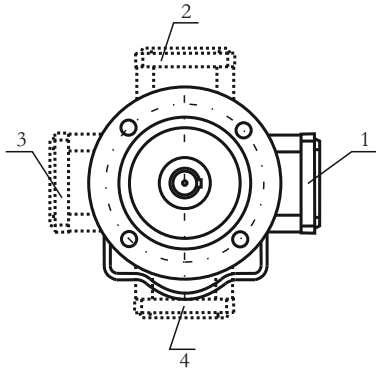


a1	b1	c1	e1	f1	s1	h1	p2	m	l	d	t	u	M
200	130	14	165	3,5	11	173	273	200	80	40	43	14	M12

	90 S	90 L	100 L	112 M	132 S	132 M
k	510	525	558	572	619	657
k1	635	650	693	707	764	802



Klemens Kutusu Bağlantı Pozisyonları
Mounting position of terminal box



$T_2 \text{ max(Nm)} : 700$

Yük
Load

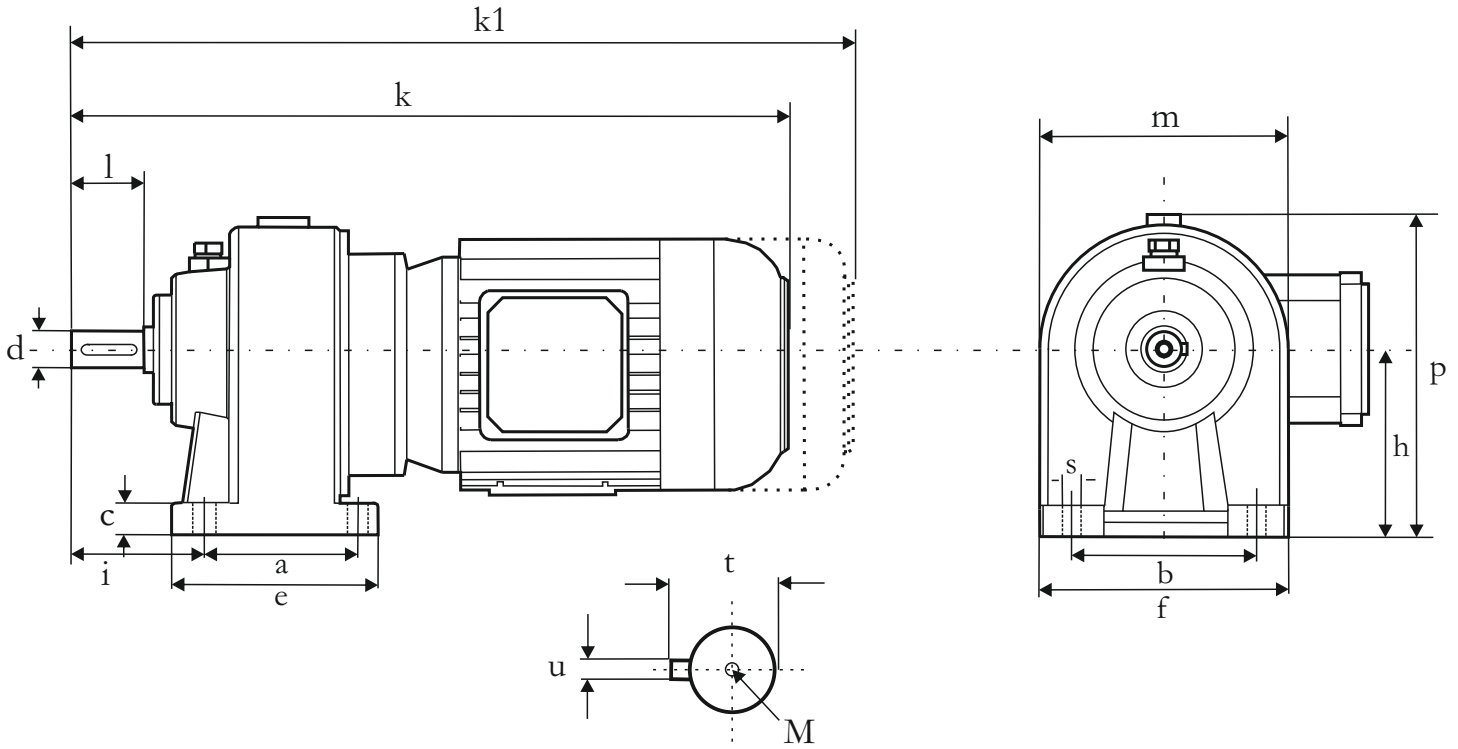
Çıkış Devir Sayısı n_2
Output speed n_2

	0-15	30-50	15-30	50-100	100-140
P_r (N)	4200	3800	3400	3000	2400
P_a (N)	1700	1500	1300	1100	900

Redüktöre gelen radyal ve eksenel yükler
Radial and axial loads on the gearbox

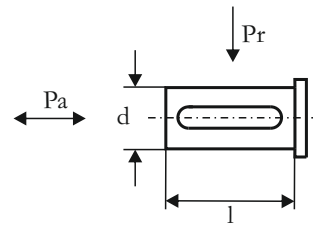
MİL ÇAP TOLERANSLARI
0-50 mm ISO K6
50mm üstü ISO J6
k1 Frenli redüktörlere aittir.

Shaft diameter tolerances
0-50 mm ISO K6
Up 50 mm ISO J6
Dimensions k1 is for motors with brake



a	b	c	e	f	s	i	h	p	m	l	d	t	u	M
134	175	25	165	215	13	120	175	275	200	80	40	43	14	M12

	71 SL	80 SL	90 S	90 SL	100 L
k	520	537	554	579	612
k1	640	657	679	704	747



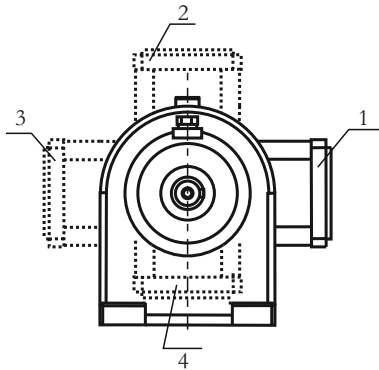
Yük
Load

Çıkış Devir Sayısı n2
Output speed n2

	0-15	30-50	15-30	50-100	100-140
Pr (N)	4200	3800	3400	3000	2400
Pa(N)	1700	1500	1300	1100	900

Redüktöre gelen radyal ve eksenel yükler
Radial and axial loads on the gearbox

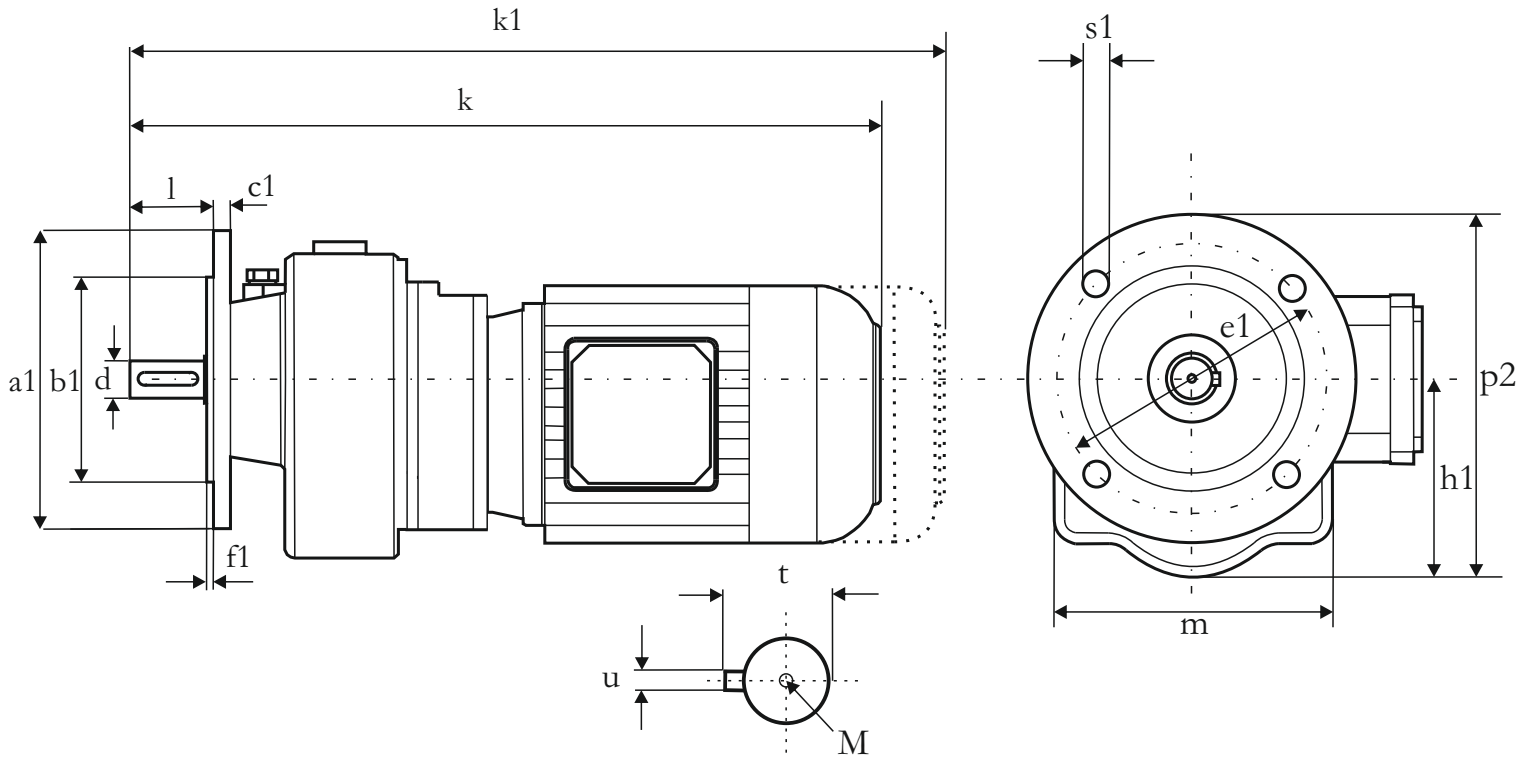
Klemens Kutusu Bağlantı Pozisyonları
Mounting position of terminal box



T₂ max(Nm) : 700

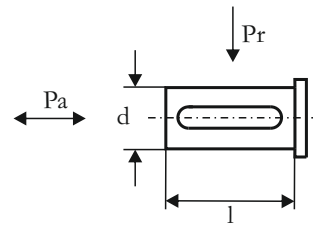
MİL ÇAP TOLERANSLARI
0-50 mm ISO K6
50mm üstü ISO J6
k1 Frenli redüktörlere aittir.

Shaft diameter tolerances
0-50 mm ISO K6
Up 50 mm ISO J6
Dimensions k1 is for motors with brake

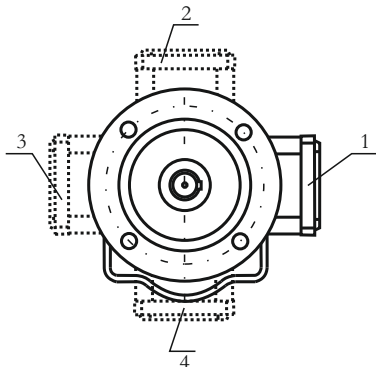


a1	b1	c1	e1	f1	s1	h1	p2	m	l	d	t	u	M
200	130	14	165	3,5	11	173	273	200	80	40	43	14	M12

	71 SL	80 SL	90 S	90 SL	100 L
k	520	537	554	579	612
k1	640	657	679	704	747



Klemens Kutusu Bağlantı Pozisyonları
Mounting position of terminal box



$T_2 \max(\text{Nm}) : 700$

Yük
Load

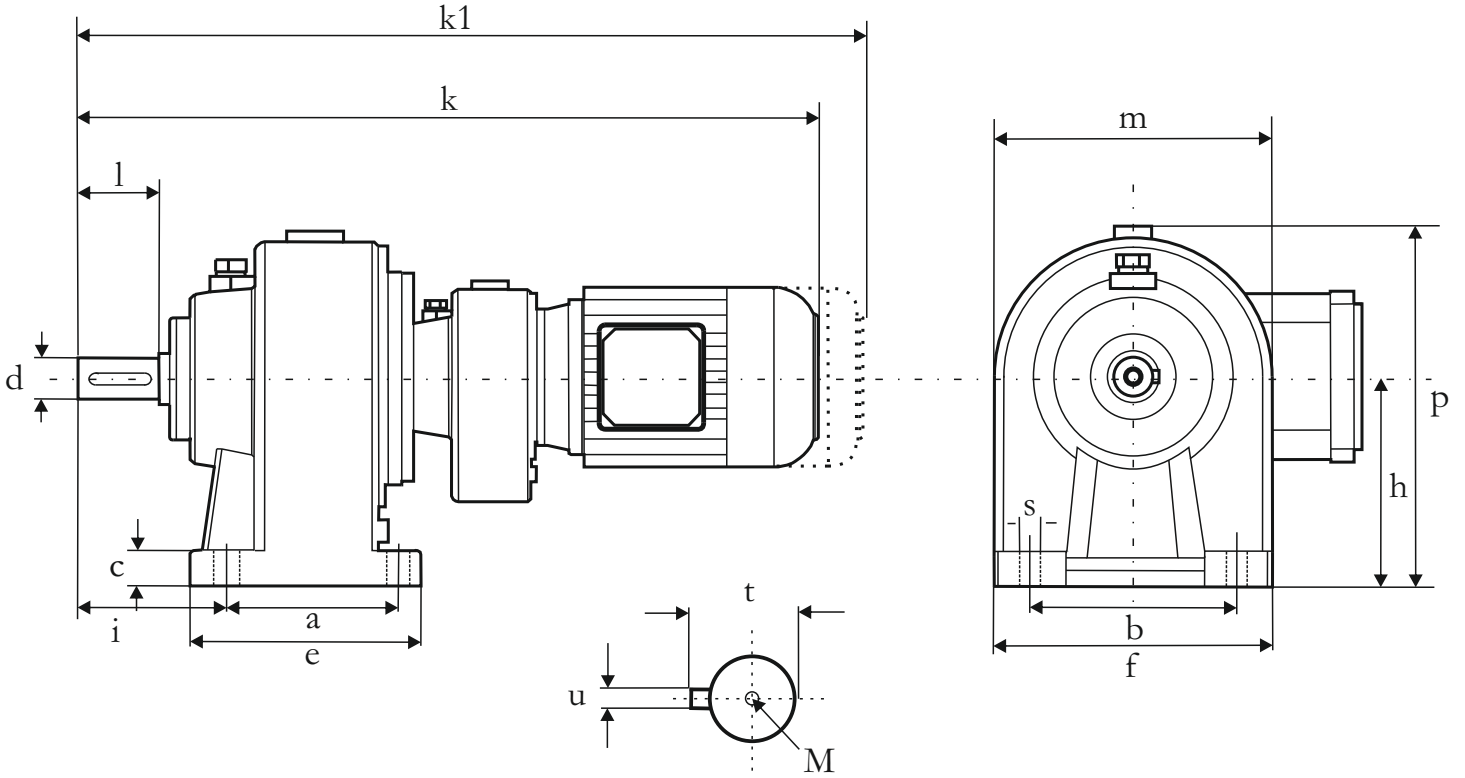
Çıkış Devir Sayısı n_2
Output speed n_2

	0-15	30-50	15-30	50-100	100-140
P_r (N)	4200	3800	3400	3000	2400
P_a (N)	1700	1500	1300	1100	900

Redüktöre gelen radyal ve eksenel yükler
Radial and axial loads on the gearbox

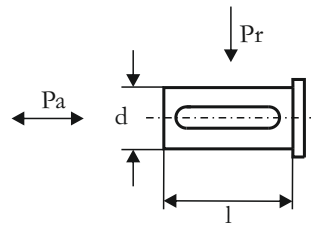
MİL ÇAP TOLERANSLARI
0-50 mm ISO K6
50mm üstü ISO J6
k1 Frenli redüktörlere aittir.

Shaft diameter tolerances
0-50 mm ISO K6
 U_p 50 mm ISO J6
Dimensions k_1 is for motors with brake

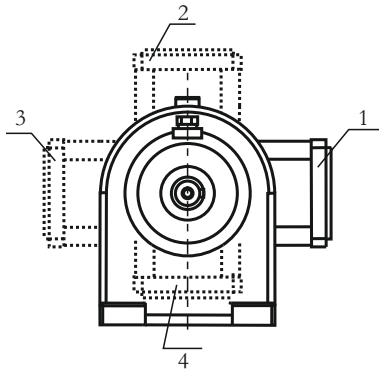


a	b	c	e	f	s	i	h	p	m	l	d	t	u	M
134	175	25	165	215	13	120	175	275	200	80	40	43	14	M12

	63 SL	71 SL	80 SL
k	556	575	592
k1	612	695	712



Klemens Kutusu Bağlantı Pozisyonları
Mounting position of terminal box



$T_2 \text{ max(Nm)} : 700$

Yük
Load

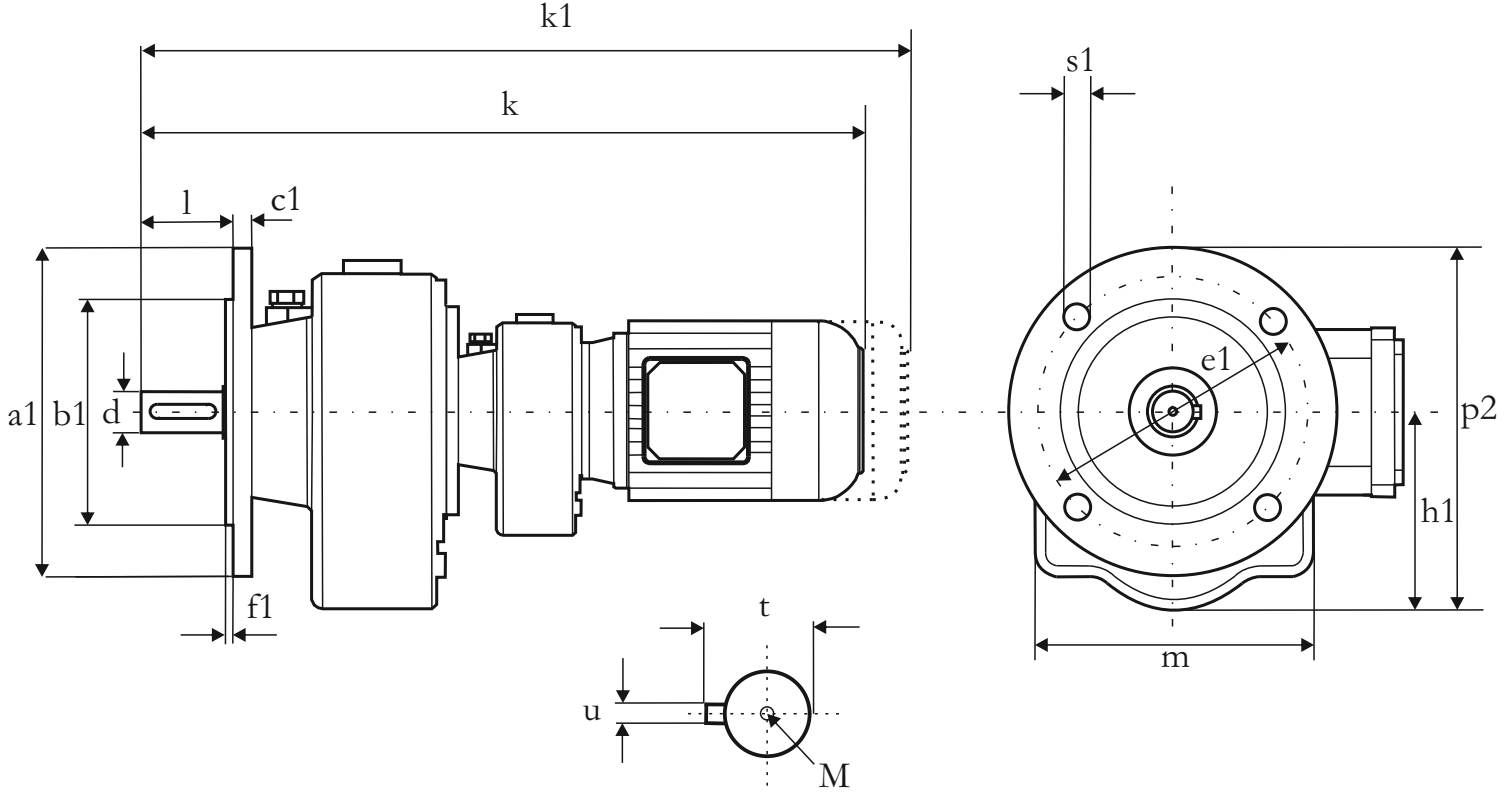
Çıkış Devir Sayısı n_2
Output speed n_2

	0-15	30-50	15-30	50-100	100-140
P_r (N)	4200	3800	3400	3000	2400
P_a (N)	1700	1500	1300	1100	900

Redüktöre gelen radyal ve eksenel yükler
Radial and axial loads on the gearbox

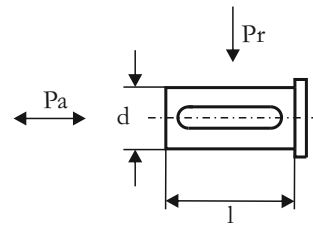
MİL ÇAP TOLERANSLARI
0-50 mm ISO K6
50mm üstü ISO J6
k1 Frenli redüktörlere aittir.

Shaft diameter tolerances
0-50 mm ISO K6
Up 50 mm ISO J6
Dimensions k1 is for motors with brake

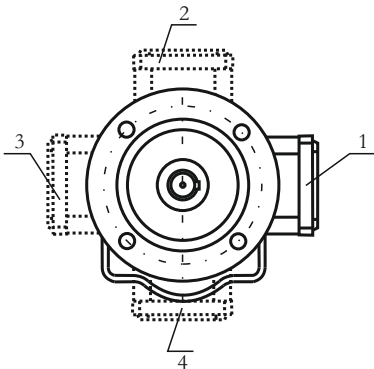


a1	b1	c1	e1	f1	s1	h1	p2	m	l	d	t	u	M
200	130	14	165	3,5	11	173	273	200	80	40	43	14	M12

	63 SL	71 SL	80 SL
k	556	575	592
k1	612	695	712



Klemens Kutusu Bağlantı Pozisyonları
Mounting position of terminal box



$T_2 \max(\text{Nm}) : 700$

Yük
Load

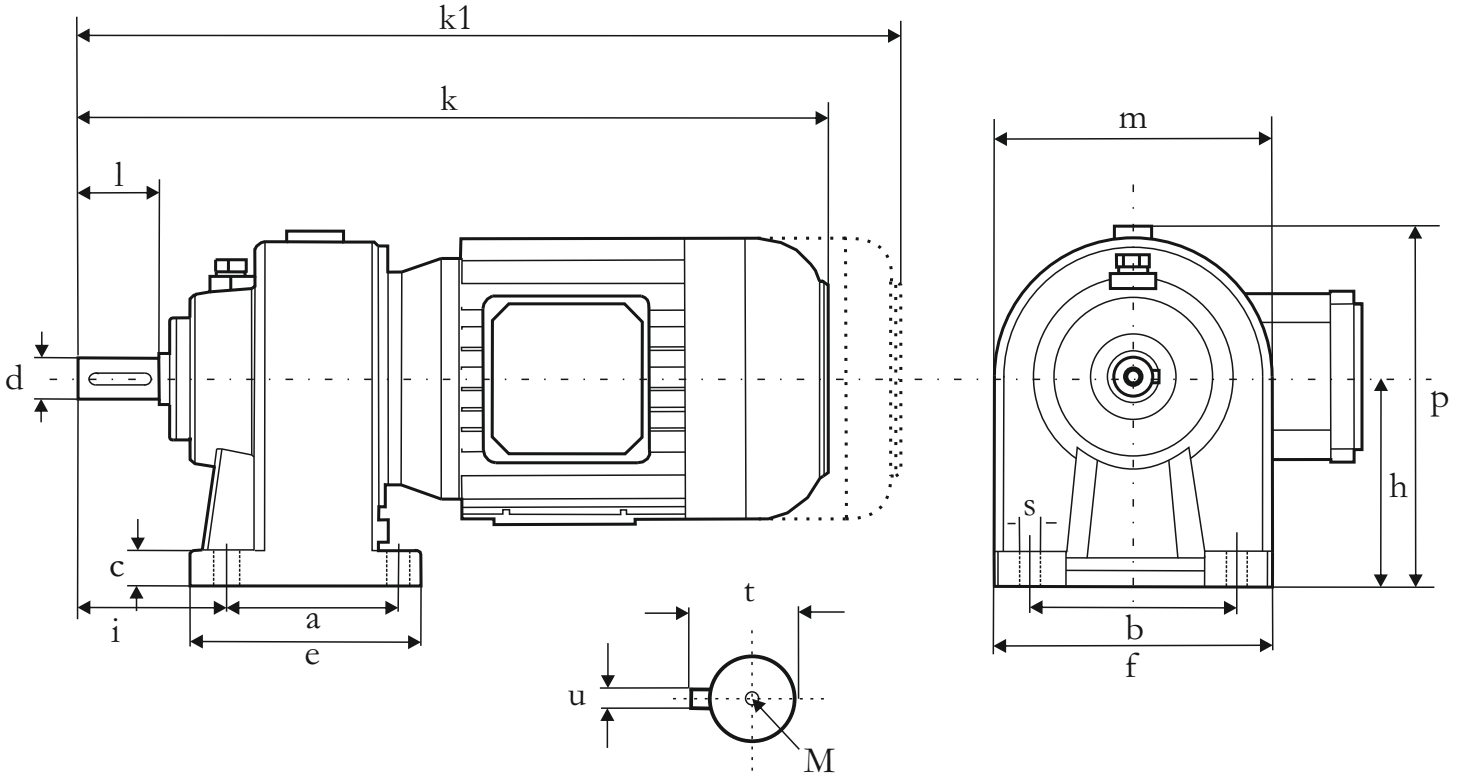
Çıkış Devir Sayısı n_2
Output speed n_2

	0-15	30-50	15-30	50-100	100-140
P_r (N)	4200	3800	3400	3000	2400
P_a (N)	1700	1500	1300	1100	900

Redüktöre gelen radyal ve eksenel yükler
Radial and axial loads on the gearbox

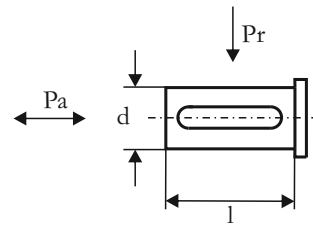
MİL ÇAP TOLERANSLARI
0-50 mm ISO K6
50mm üstü ISO J6
k1 Frenli redüktörlere aittir.

Shaft diameter tolerances
0-50 mm ISO K6
 U_p 50 mm ISO J6
Dimensions k_1 is for motors with brake

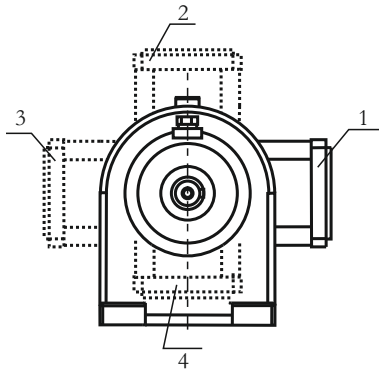


a	b	c	e	f	s	i	h	p	m	l	d	t	u	M
190	260	35	230	314	18	134	250	375	250	100	50	53,5	16	M14

	100 S	112 M	132 S	160 M	160 L
k	616	630	715	784	828
k1	751	765	860	954	998



Klemens Kutusu Bağlantı Pozisyonları
Mounting position of terminal box



$T_2 \text{ max(Nm)} : 1200$

Yük
Load

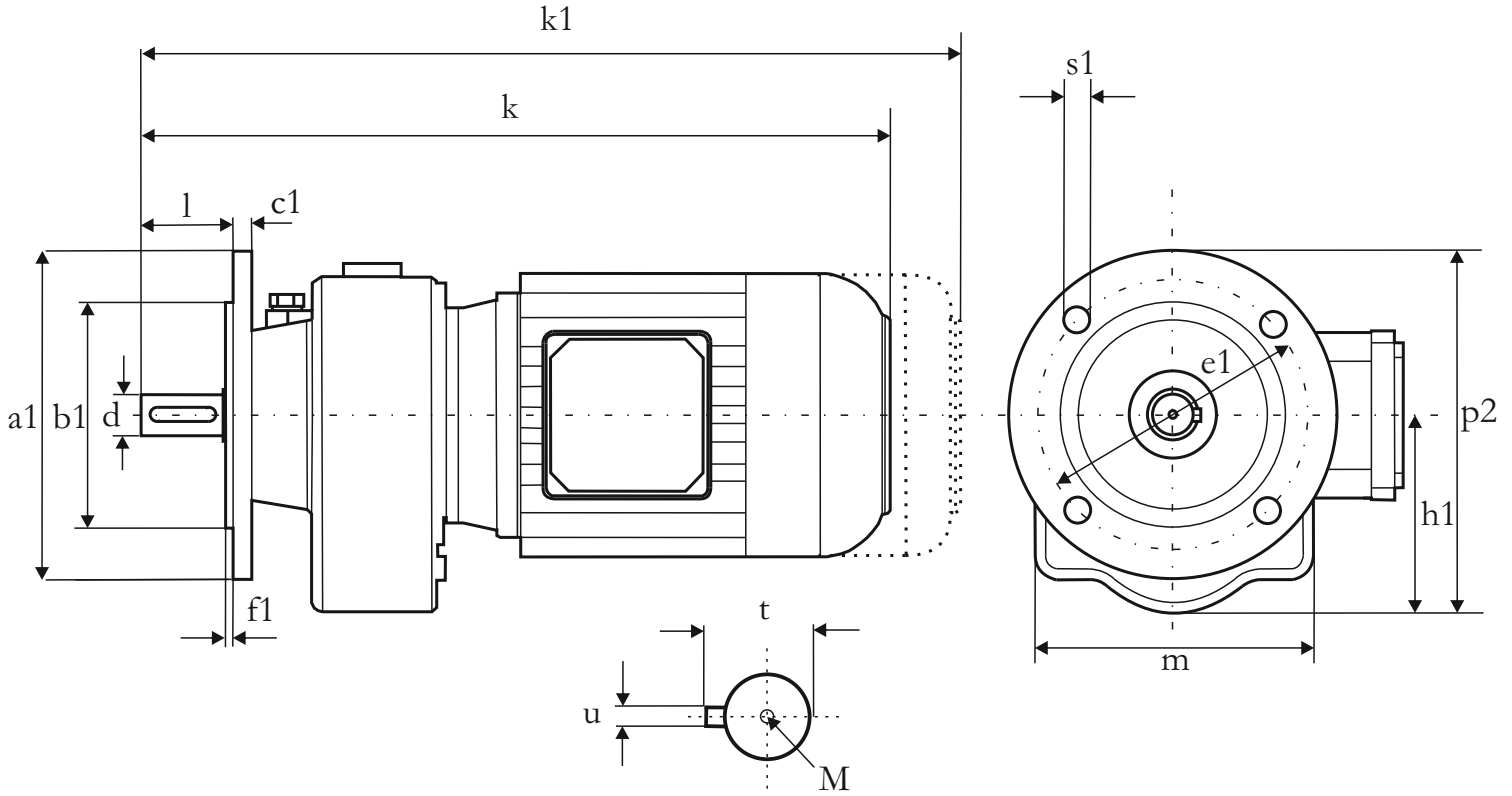
Çıkış Devir Sayısı n_2
Output speed n_2

	0-15	30-50	15-30	50-100	100-140
P_r (N)	5200	4500	3900	3500	3000
P_a (N)	2100	1900	1700	1500	1200

Redüktöre gelen radyal ve eksenel yükler
Radial and axial loads on the gearbox

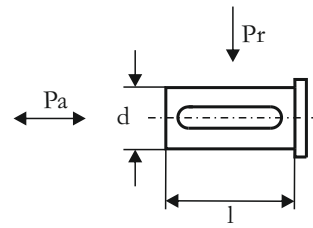
MİL ÇAP TOLERANSLARI
0-50 mm ISO K6
50mm üstü ISO J6
k1 Frenli redüktörlere aittir.

Shaft diameter tolerances
0-50 mm ISO K6
Up 50 mm ISO J6
Dimensions k1 is for motors with brake

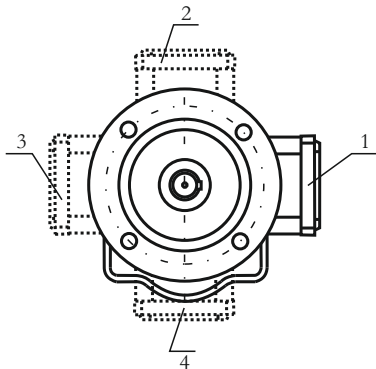


	100 S	112 M	132 S	160 M	160 L
k	616	630	715	784	828
k1	751	765	860	954	998
a1	250	250	300	300	350
b1	180	180	230	230	250
c1	16	16	20	20	20
e1	215	215	265	265	300
f1	4	4	4	4	5
s1	14	14	14	14	18

h1	p2	m	l	d	t	u	M
245	370	250	100	50	53,5	16	M14



Klemens Kutusu Bağlantı Pozisyonları
Mounting position of terminal box



$T_2 \max(\text{Nm}) : 1200$

Yük
Load

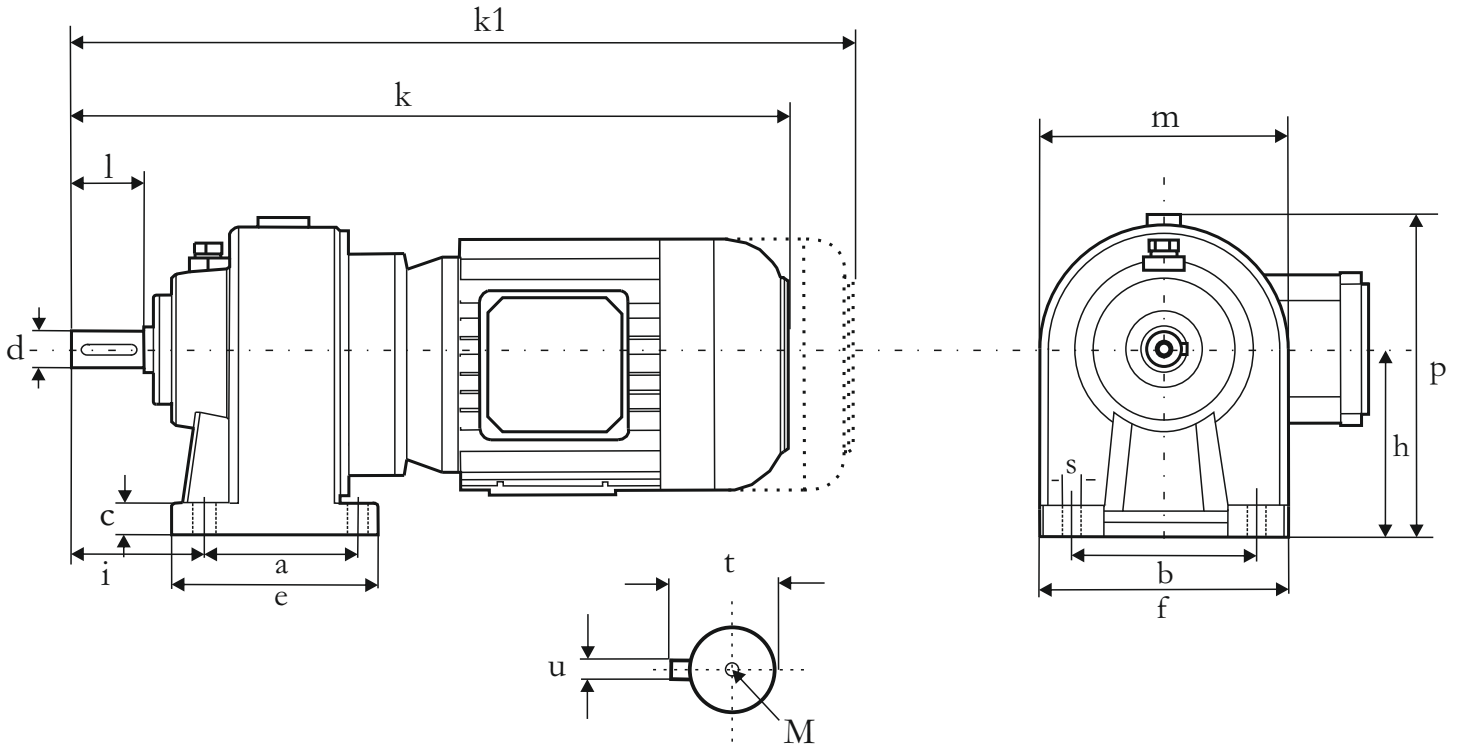
Çıkış Devir Sayısı n_2
Output speed n_2

	0-15	30-50	15-30	50-100	100-140
P_r (N)	5200	4500	3900	3500	3000
P_a (N)	2100	1900	1700	1500	1200

Redüktöre gelen radyal ve eksenel yükler
Radial and axial loads on the gearbox

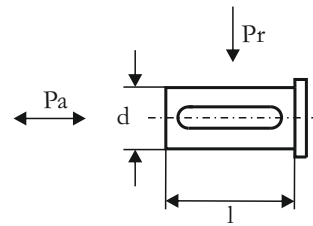
MİL ÇAP TOLERANSLARI
0-50 mm ISO K6
50mm üstü ISO J6
 k_1 Frenli redüktörlere aittir.

Shaft diameter tolerances
0-50 mm ISO K6
Up 50 mm ISO J6
Dimensions k_1 is for motors with brake

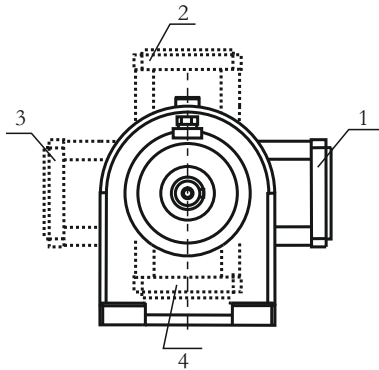


a	b	c	e	f	s	i	h	p	m	l	d	t	u	M
190	260	35	230	314	18	134	250	375	250	100	50	53,5	16	M14

	80 SL	90 S	90 L	100 L	112 M	132 S	132 M
k	623	640	665	698	712	759	797
k1	743	765	790	833	847	904	942



Klemens Kutusu Bağlantı Pozisyonları
Mounting position of terminal box



$T_2 \max(\text{Nm}) : 1200$

Yük
Load

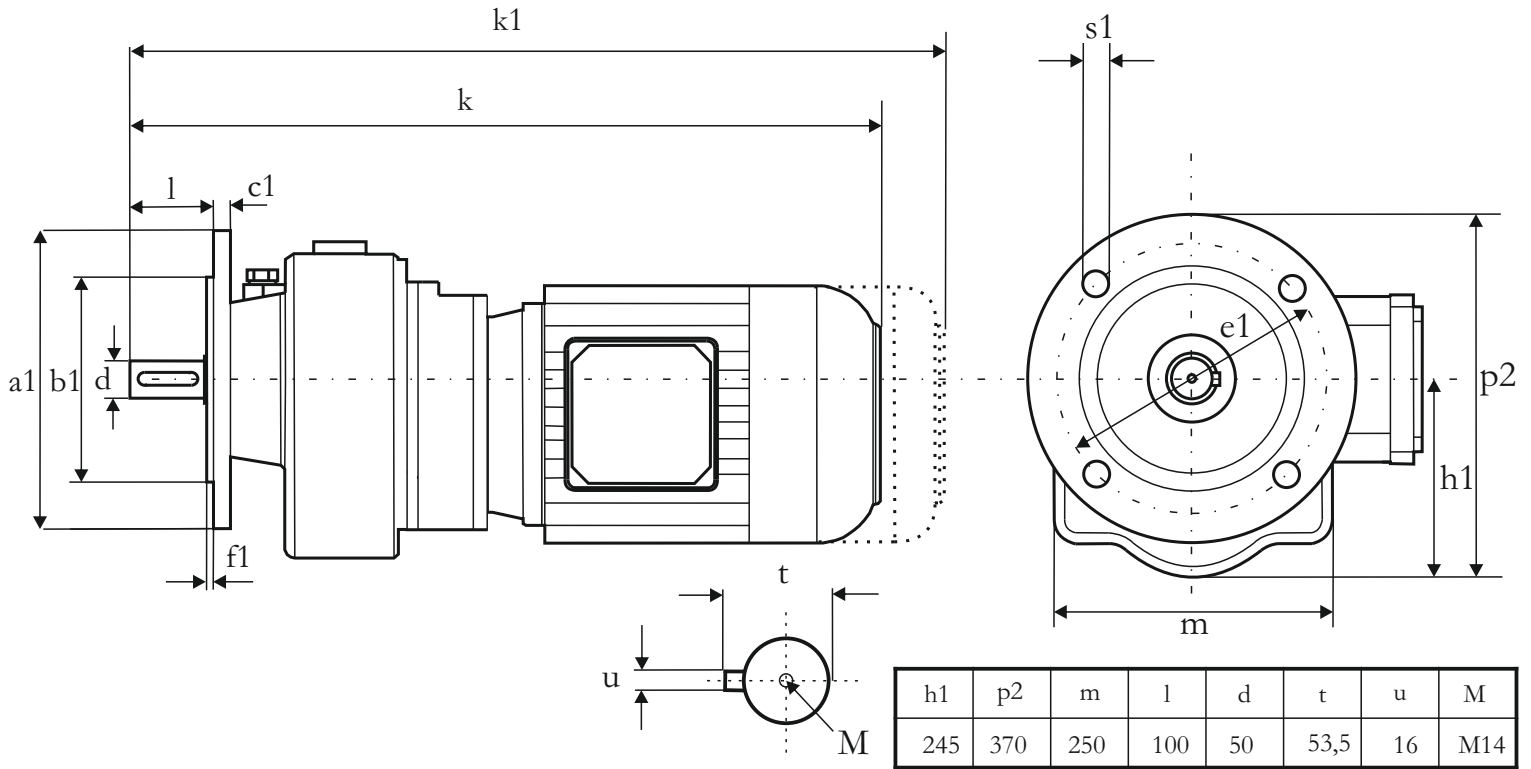
Çıkış Devir Sayısı n_2
Output speed n_2

	0-15	30-50	15-30	50-100	100-140
P_r (N)	5200	4500	3900	3500	3000
P_a (N)	2100	1900	1700	1500	1200

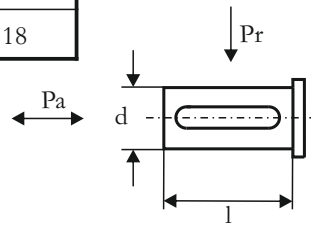
Redüktöre gelen radyal ve eksenel yükler
Radial and axial loads on the gearbox

MİL ÇAP TOLERANSLARI
0-50 mm ISO K6
50mm üstü ISO J6
k1 Frenli redüktörlere aittir.

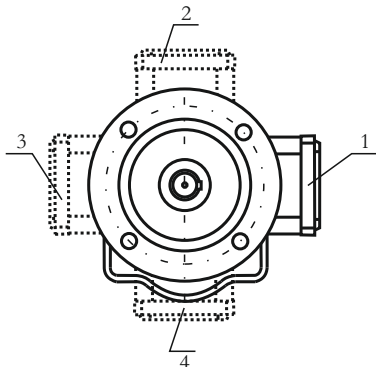
Shaft diameter tolerances
0-50 mm ISO K6
Up 50 mm ISO J6
Dimensions k1 is for motors with brake



	80 SL	90 S	90L	100 L	112 M	132 S	132 M
k	623	640	665	698	712	859	797
k1	743	765	790	833	847	904	942
a1	250	250	250	300	300	350	350
b1	180	180	180	230	230	250	250
c1	16	16	16	20	20	20	20
e1	215	215	215	265	265	300	300
f1	4	4	4	4	4	5	5
s1	14	14	14	14	14	18	18



Klemens Kutusu Bağlantı Pozisyonları
Mounting position of terminal box



T₂ max(Nm) : 1200

Yük
Load

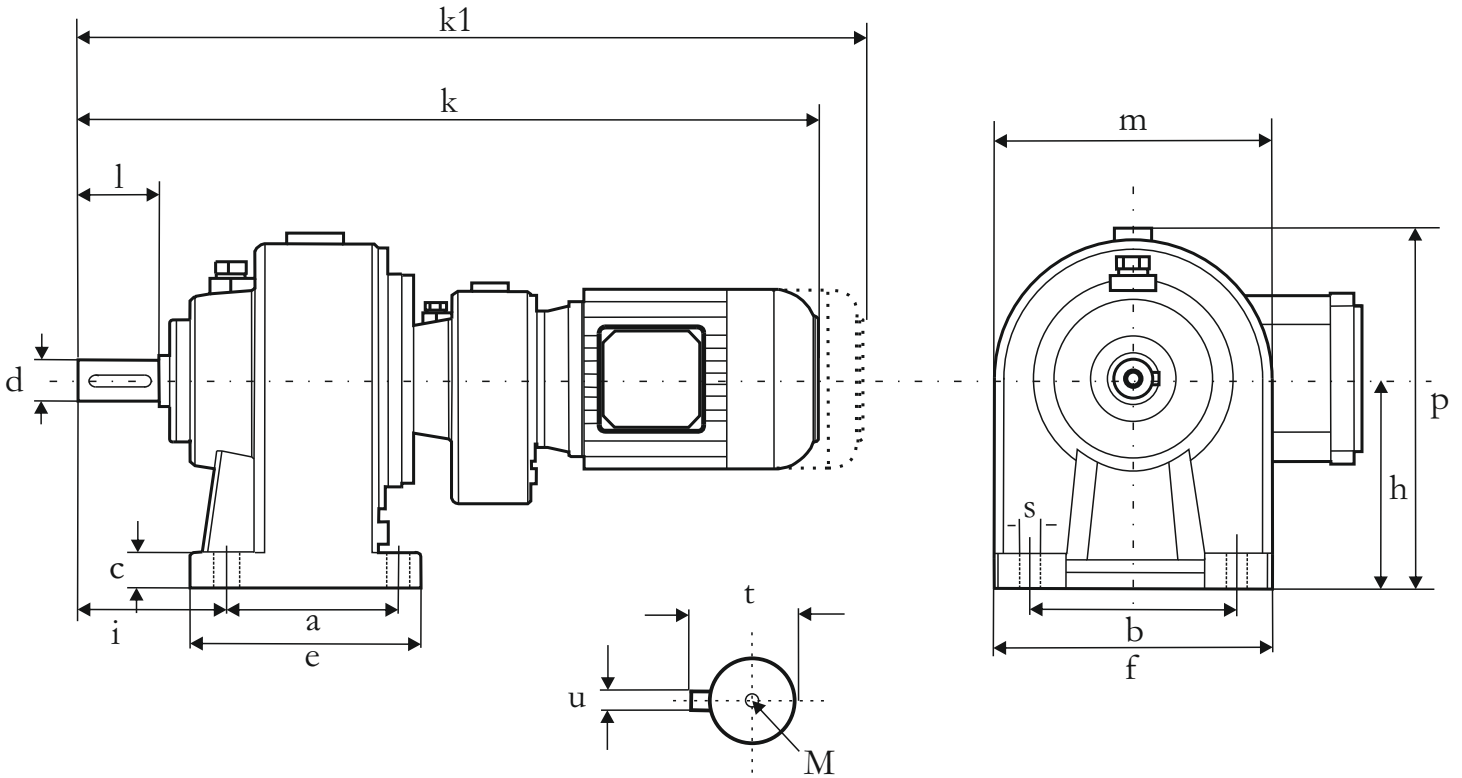
Çıkış Devir Sayısı n₂
Output speed n₂

	0-15	30-50	15-30	50-100	100-140
Pr (N)	5200	4500	3900	3500	3000
Pa(N)	2100	1900	1700	1500	1200

Redüktöre gelen radyal ve eksenel yükler
Radial and axial loads on the gearbox

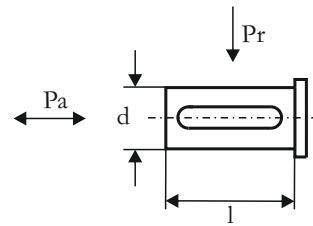
MİL ÇAP TOLERANSLARI
0-50 mm ISO K6
50mm üstü ISO J6
k1 Frenli redüktörlere aittir.

Shaft diameter tolerances
0-50 mm ISO K6
Up 50 mm ISO J6
Dimensions k1 is for motors with brake



a	b	c	e	f	s	i	h	p	m	l	d	t	u	M
190	260	35	230	314	18	134	250	375	250	100	50	53,5	16	M14

	71 SL	80 SL	90 S	90 L
k	647	664	681	706
k1	764	784	806	831



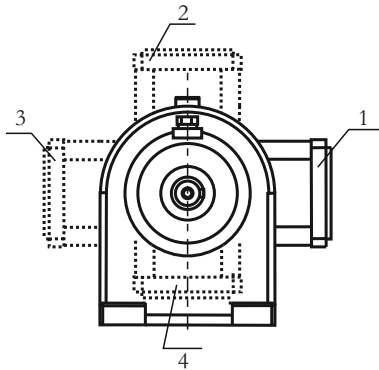
Yük
Load

Çıkış Devir Sayısı n2
Output speed n2

	0-15	30-50	15-30	50-100	100-140
Pr (N)	5200	4500	3900	3500	3000
Pa(N)	2100	1900	1700	1500	1200

Redüktöre gelen radyal ve eksenel yükler
Radial and axial loads on the gearbox

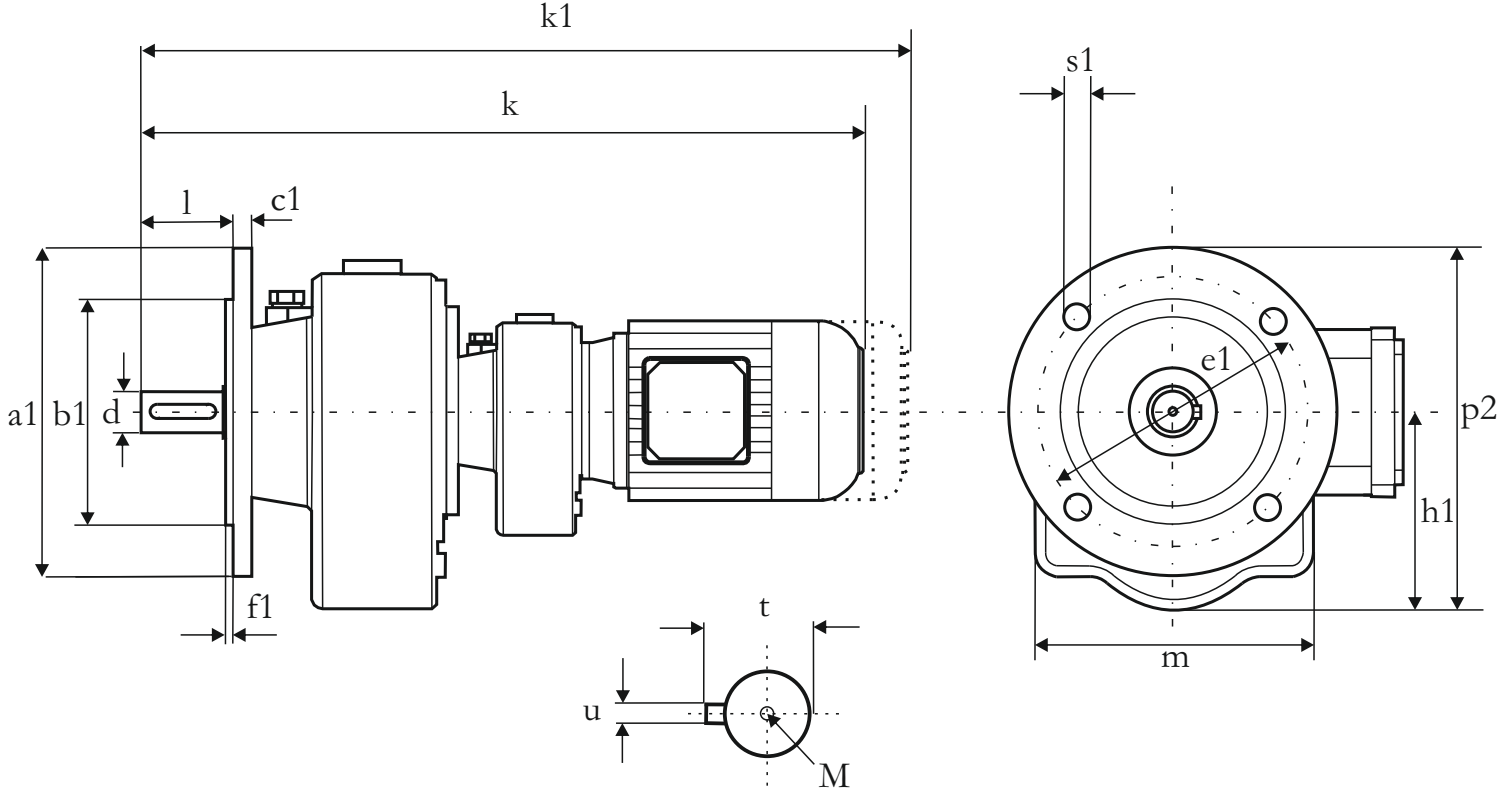
Klemens Kutusu Bağlantı Pozisyonları
Mounting position of terminal box



T₂ max(Nm) : 1200

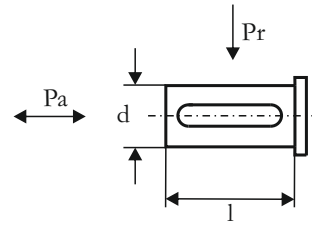
MİL ÇAP TOLERANSLARI
0-50 mm ISO K6
50mm üstü ISO J6
k1 Frenli redüktörlere aittir.

Shaft diameter tolerances
0-50 mm ISO K6
Up 50 mm ISO J6
Dimensions k1 is for motors with brake

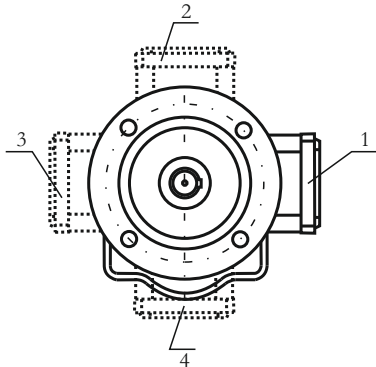


	71 SL	80 SL	90 S	90 L
k	616	630	715	784
k1	751	765	860	954
a1	300	300	300	350
b1	230	230	230	250
c1	16	16	20	20
e1	265	265	265	300
f1	4	4	4	5
s1	14	14	14	18

h1	p2	m	l	d	t	u	M
245	370	250	100	50	53,5	16	M14



Klemens Kutusu Bağlantı Pozisyonları
Mounting position of terminal box



$T_2 \max(\text{Nm}) : 1200$

Yük
Load

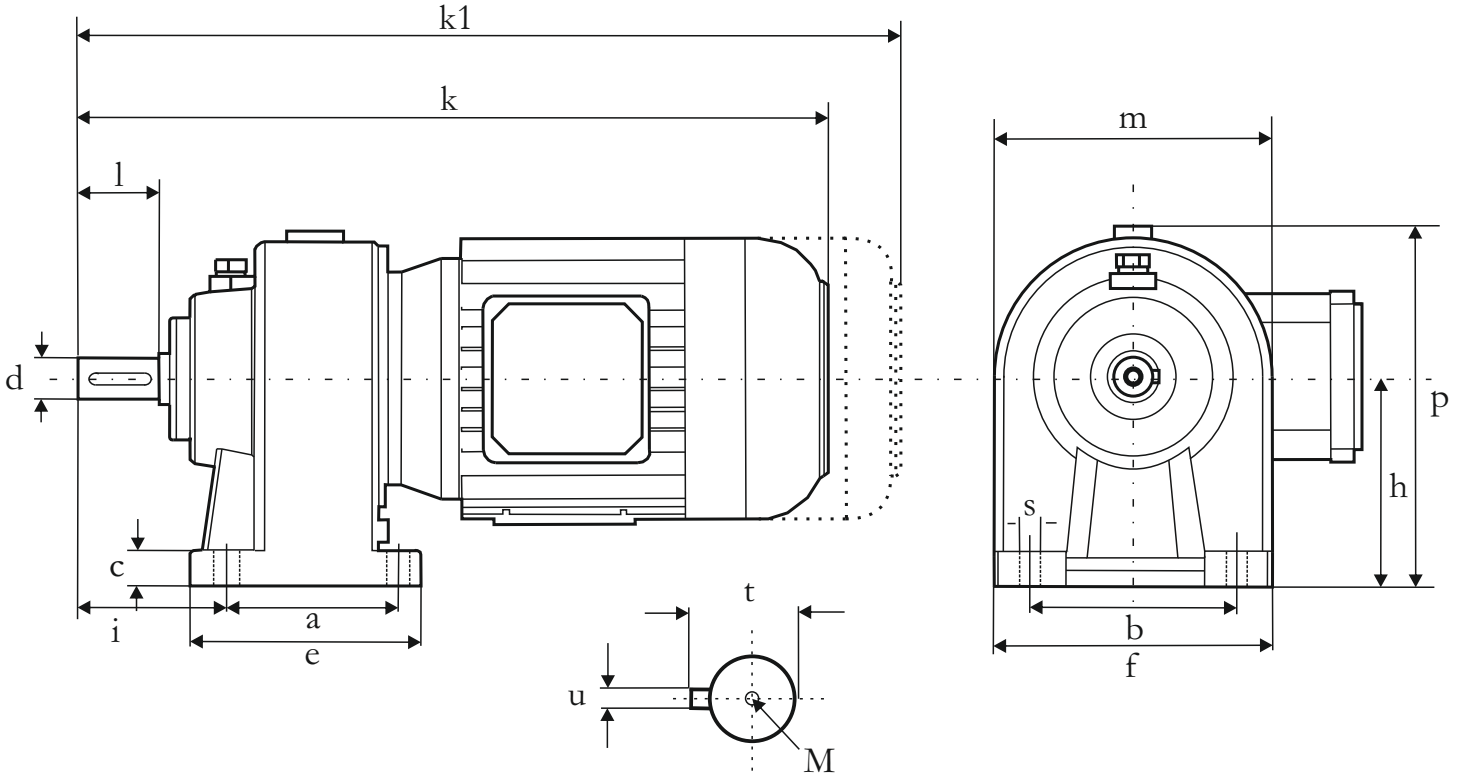
Çıkış Devir Sayısı n_2
Output speed n_2

	0-15	30-50	15-30	50-100	100-140
P_r (N)	5200	4500	3900	3500	3000
P_a (N)	2100	1900	1700	1500	1200

Redüktöre gelen radyal ve eksenel yükler
Radial and axial loads on the gearbox

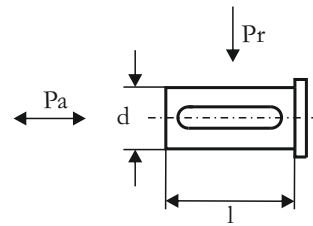
MİL ÇAP TOLERANSLARI
0-50 mm ISO K6
50mm üstü ISO J6
 k_1 Frenli redüktörlere aittir.

Shaft diameter tolerances
0-50 mm ISO K6
 U_p 50 mm ISO J6
Dimensions k_1 is for motors with brake

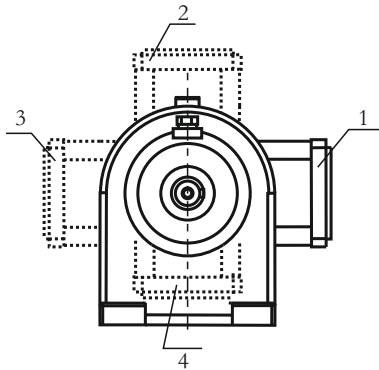


a	b	c	e	f	s	i	h	p	m	l	d	t	u	M
240	325	45	300	400	22	169	280	430	300	130	65	69	18	M16

	112 L	132 S	132 M	160 M	160 L	180 M	180 L
k	706	763	801	870	914	935	973
k1	841	908	946	1040	1084	1100	1146



Klemens Kutusu Bağlantı Pozisyonları
Mounting position of terminal box



$T_2 \text{ max(Nm)} : 2800$

Yük
Load

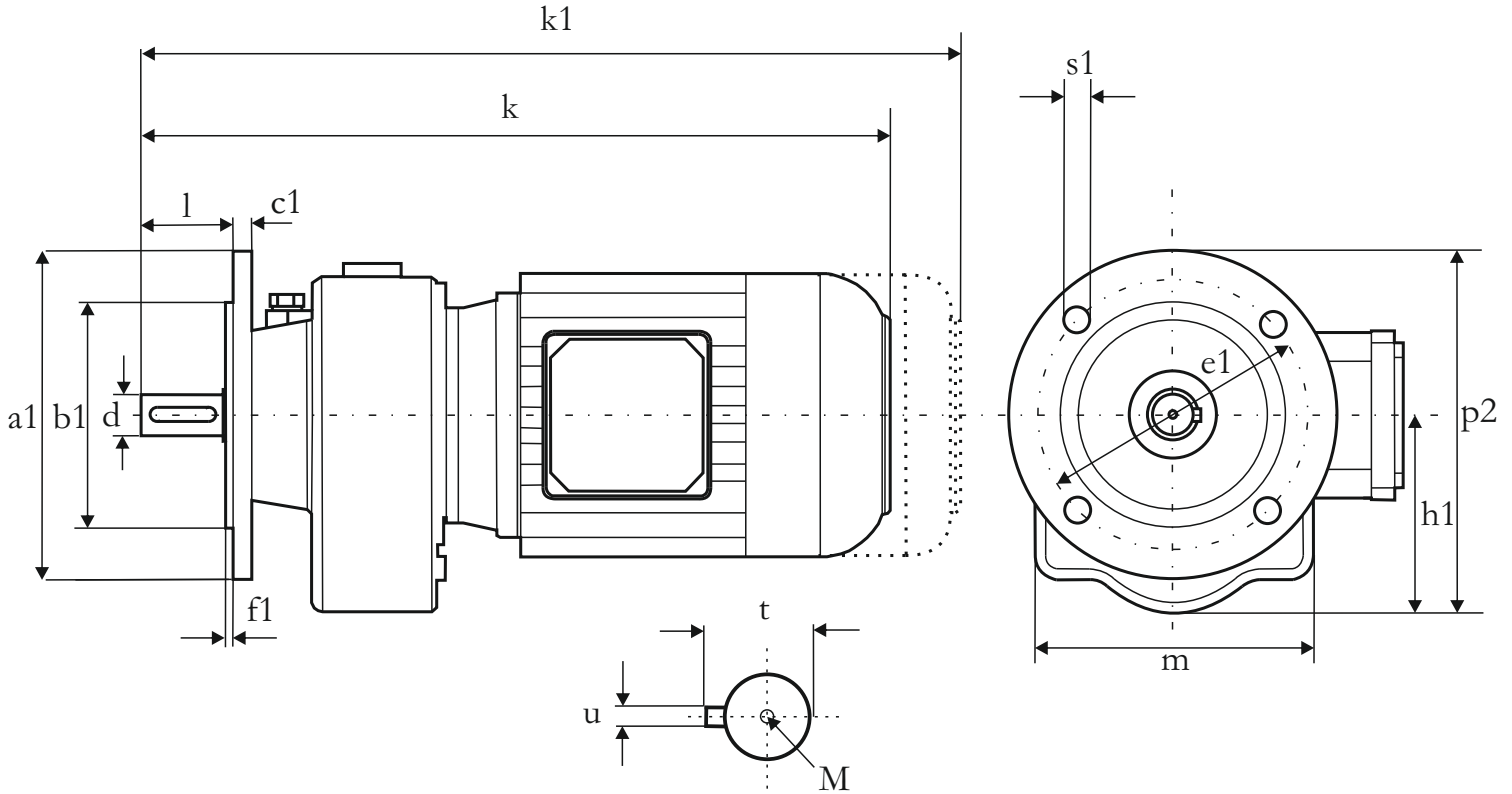
Çıkış Devir Sayısı n_2
Output speed n_2

	0-15	30-50	15-30	50-100	100-140
P_r (N)	8500	7800	7200	6200	5500
P_a (N)	3400	3100	2700	2300	2100

Redüktöre gelen radyal ve eksenel yükler
Radial and axial loads on the gearbox

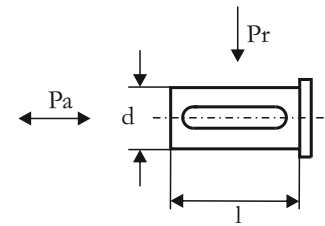
MİL ÇAP TOLERANSLARI
0-50 mm ISO K6
50mm üstü ISO J6
k1 Frenli redüktörlere aittir.

Shaft diameter tolerances
0-50 mm ISO K6
Up 50 mm ISO J6
Dimensions k1 is for motors with brake

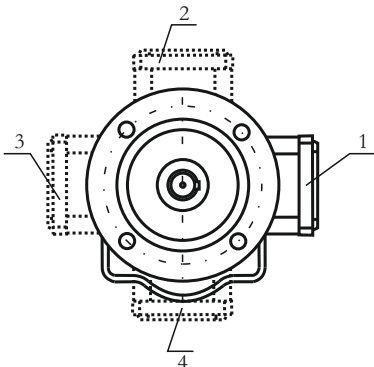


c1	h1	p2	m	l	d	t	u	M
20	275	424	300	130	65	69	18	M16

	112 L	132 S	132 M	160 M	160 L	180 M	180 L
k	706	763	801	870	914	935	973
k1	841	908	946	1040	1084	1100	1146
a1	300	300	350	350	350	350	350
b1	230	230	250	250	250	250	250
e1	265	265	300	300	300	300	300
f1	4	4	5	5	5	5	5
s1	14	14	18	18	18	18	18



Klemens Kutusu Bağlantı Pozisyonları
Mounting position of terminal box



$T_2 \max(\text{Nm}) : 2800$

Yük
Load

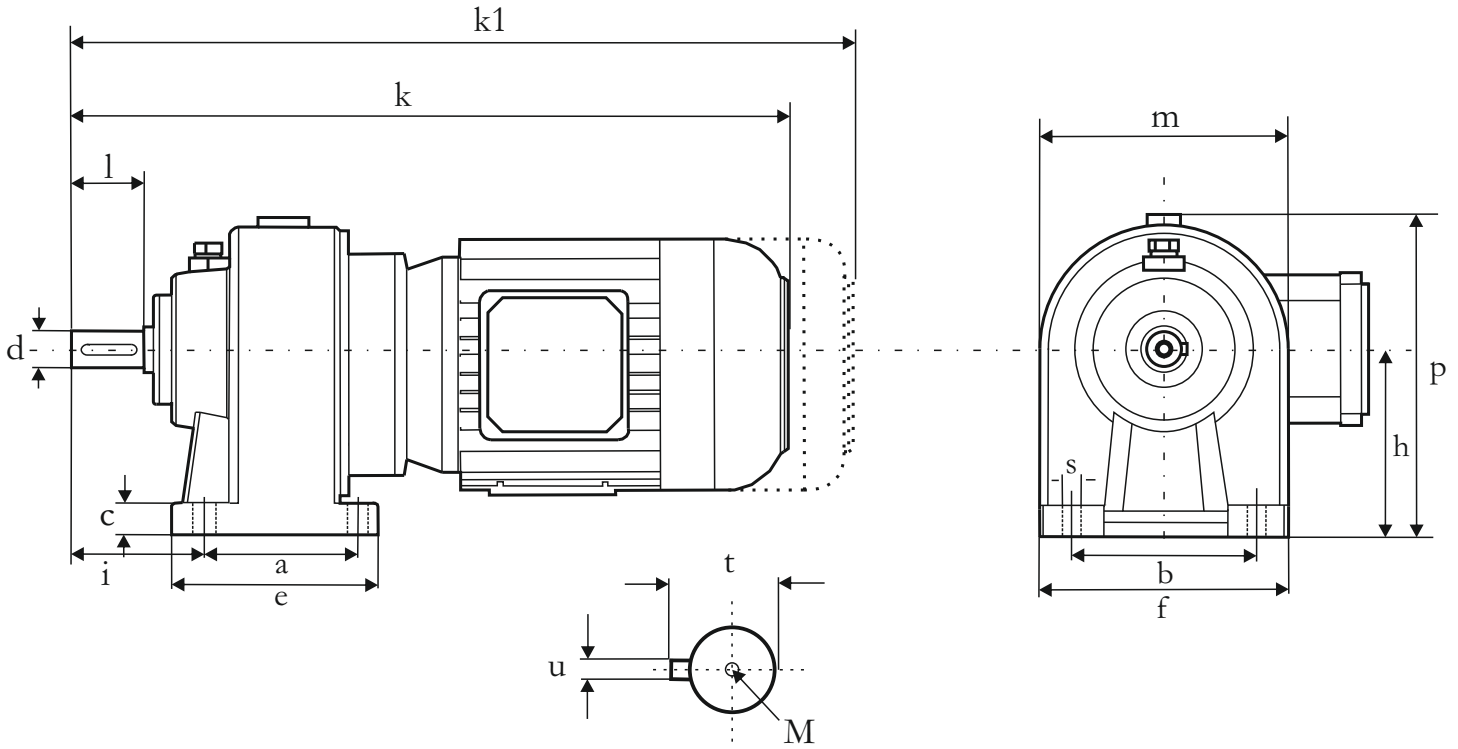
Çıkış Devir Sayısı n2
Output speed n2

	0-15	30-50	15-30	50-100	100-140
Pr (N)	8500	7800	7200	6200	5500
Pa(N)	3400	3100	2700	2300	2100

Redüktöre gelen radyal ve eksenel yükler
Radial and axial loads on the gearbox

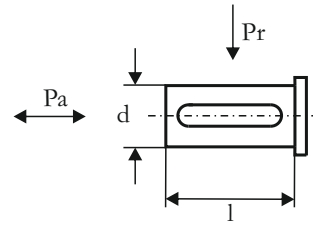
MİL ÇAP TOLERANSLARI
0-50 mm ISO K6
50mm üstü ISO J6
k1 Frenli redüktörlere aittir.

Shaft diameter tolerances
0-50 mm ISO K6
Up 50 mm ISO J6
Dimensions k1 is for motors with brake

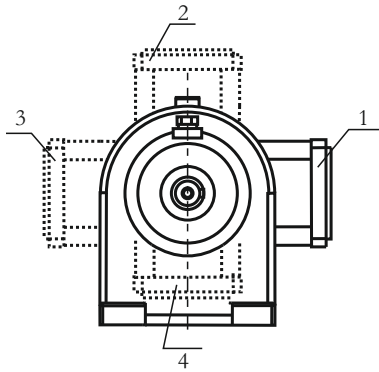


a	b	c	e	f	s	i	h	p	m	l	d	t	u	M
240	325	45	300	400	22	169	280	430	300	130	65	69	18	M16

	80 SL	90S	90L	100 L	112 M	132 S	132 M
k	712	729	754	787	797	842	886
k1	832	854	879	922	932	987	1031



Klemens Kutusu Bağlantı Pozisyonları
Mounting position of terminal box



$T_2 \text{ max(Nm)} : 2800$

Yük
Load

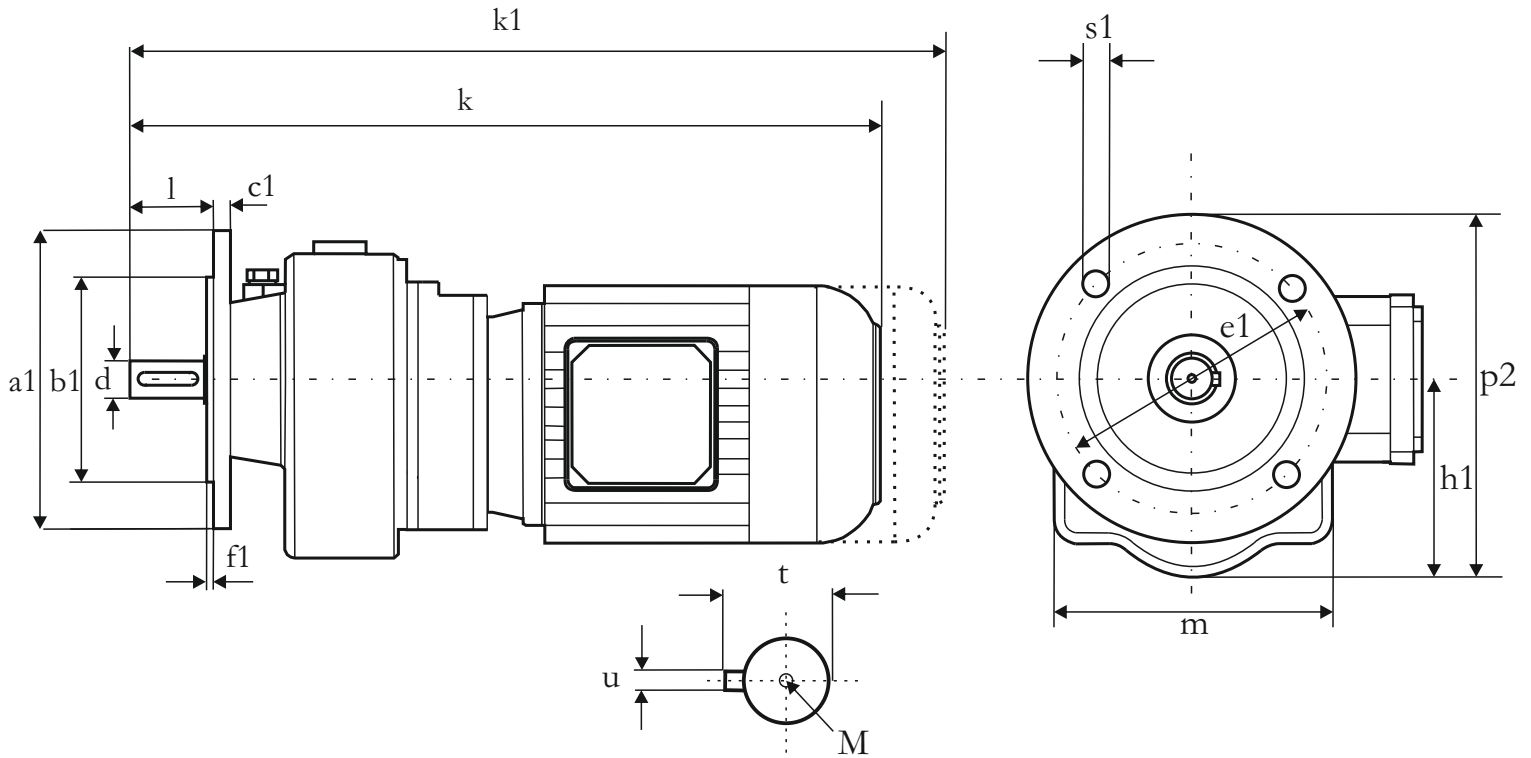
Çıkış Devir Sayısı n_2
Output speed n_2

	0-15	30-50	15-30	50-100	100-140
P_r (N)	8500	7800	7200	6200	5500
P_a (N)	3400	3100	2700	2300	2100

Redüktöre gelen radyal ve eksenel yükler
Radial and axial loads on the gearbox

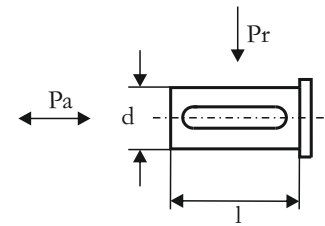
MİL ÇAP TOLERANSLARI
0-50 mm ISO K6
50mm üstü ISO J6
k1 Frenli redüktörlere aittir.

Shaft diameter tolerances
0-50 mm ISO K6
Up 50 mm ISO J6
Dimensions k1 is for motors with brake

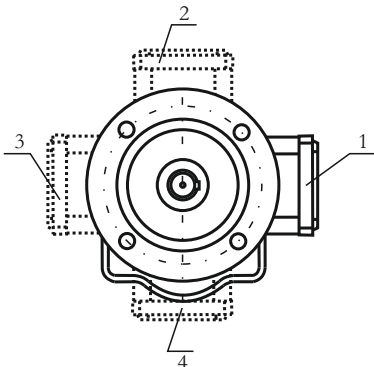


c1	h1	p2	m	l	d	t	u	M
20	275	424	300	130	65	69	18	M16

	80 SL	90 S	90 L	100 L	112 M	132 S	132 M
k	712	729	754	787	797	842	886
k1	832	854	879	922	932	987	1031
a1	300	300	350	350	350	350	350
b1	230	230	250	250	250	250	250
e1	265	265	300	300	300	300	300
f1	4	4	5	5	5	5	5
s1	14	14	18	18	18	18	18



Klemens Kutusu Bağlantı Pozisyonları
Mounting position of terminal box



T₂ max(Nm) : 2800

Yük
Load

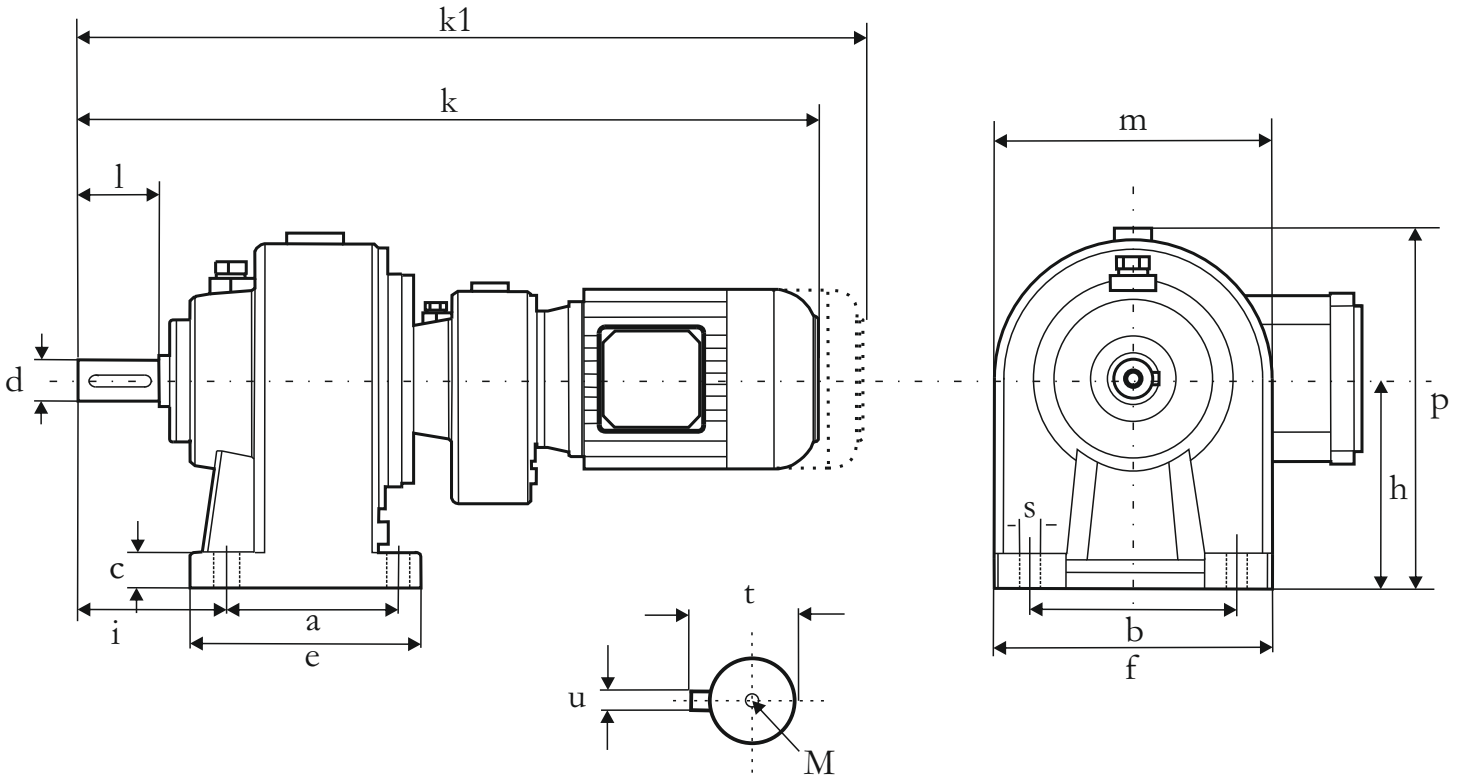
Çıkış Devir Sayısı n₂
Output speed n₂

	0-15	30-50	15-30	50-100	100-140
Pr (N)	8500	7800	7200	6200	5500
Pa(N)	3400	3100	2700	2300	2100

Redüktöre gelen radyal ve eksenel yükler
Radial and axial loads on the gearbox

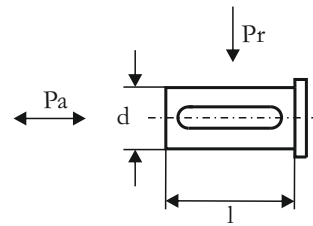
MİL ÇAP TOLERANSLARI
0-50 mm ISO K6
50mm üstü ISO J6
k1 Frenli redüktörlere aittir.

Shaft diameter tolerances
0-50 mm ISO K6
Up 50 mm ISO J6
Dimensions k1 is for motors with brake



a	b	c	e	f	s	i	h	p	m	l	d	t	u	M
240	325	45	300	400	22	169	280	430	300	130	65	69	18	M16

80 SL	
k	740
k1	841



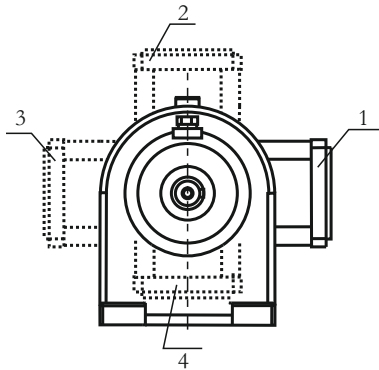
Yük
Load

Çıkış Devir Sayısı n2
Output speed n2

	0-15	30-50	15-30	50-100	100-140
Pr (N)	8500	7800	7200	6200	5500
Pa(N)	3400	3100	2700	2300	2100

Redüktöre gelen radyal ve eksenel yükler
Radial and axial loads on the gearbox

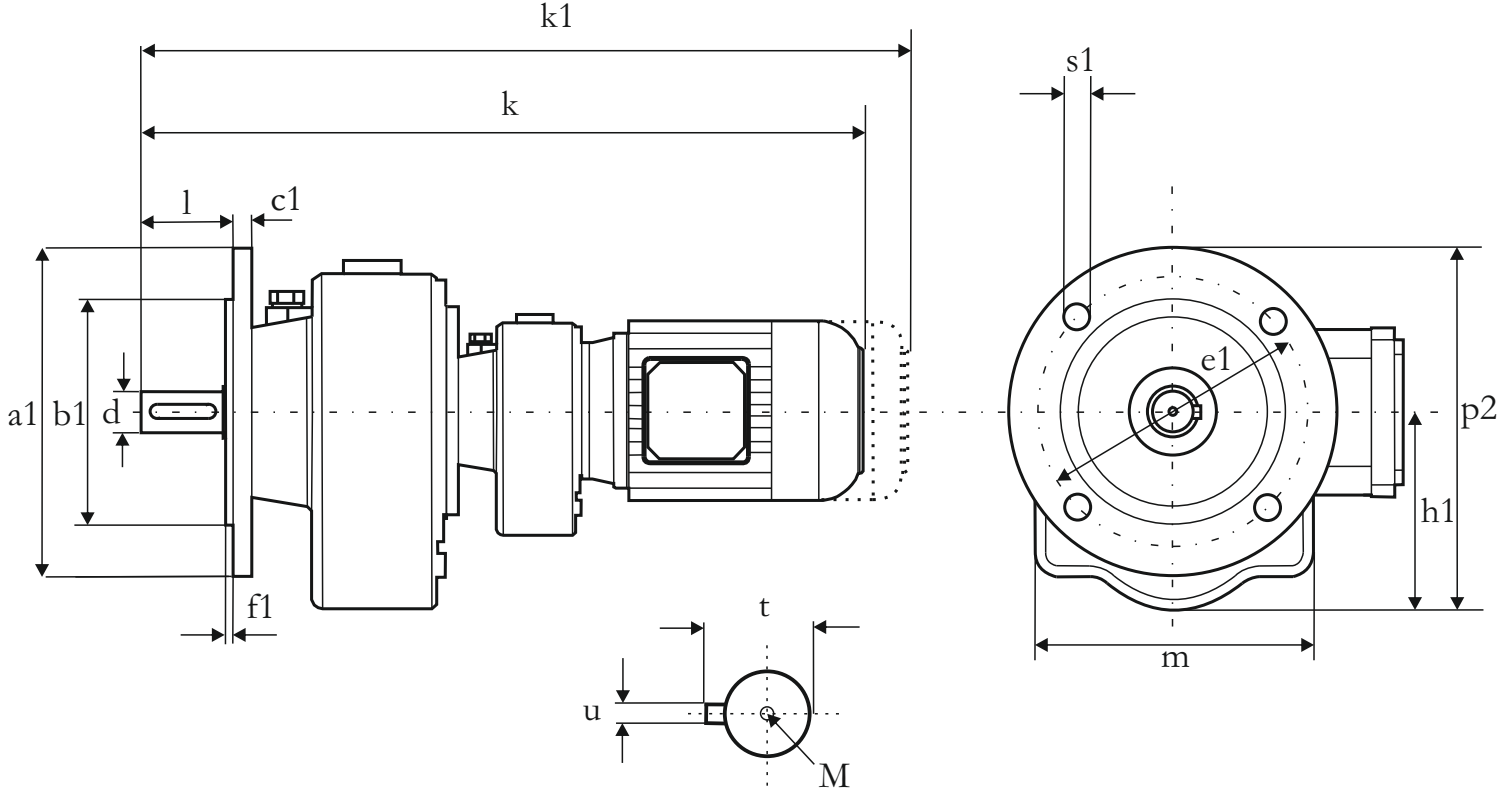
Klemens Kutusu Bağlantı Pozisyonları
Mounting position of terminal box



T₂ max(Nm) : 2800

MİL ÇAP TOLERANSLARI
0-50 mm ISO K6
50mm üstü ISO J6
k1 Frenli redüktörlere aittir.

Shaft diameter tolerances
0-50 mm ISO K6
Up 50 mm ISO J6
Dimensions k1 is for motors with brake

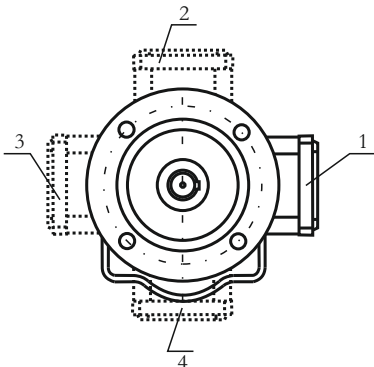


c1	h1	p2	m	l	d	t	u	M
20	275	424	300	130	65	69	18	M16

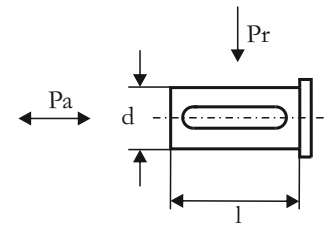
80 SL

k	740
k1	841
a1	350
b1	250
e1	300
f1	5
s1	18

Klemens Kutusu Bağlantı Pozisyonları
Mounting position of terminal box



$T_2 \text{ max(Nm)} : 2800$



Yük
Load

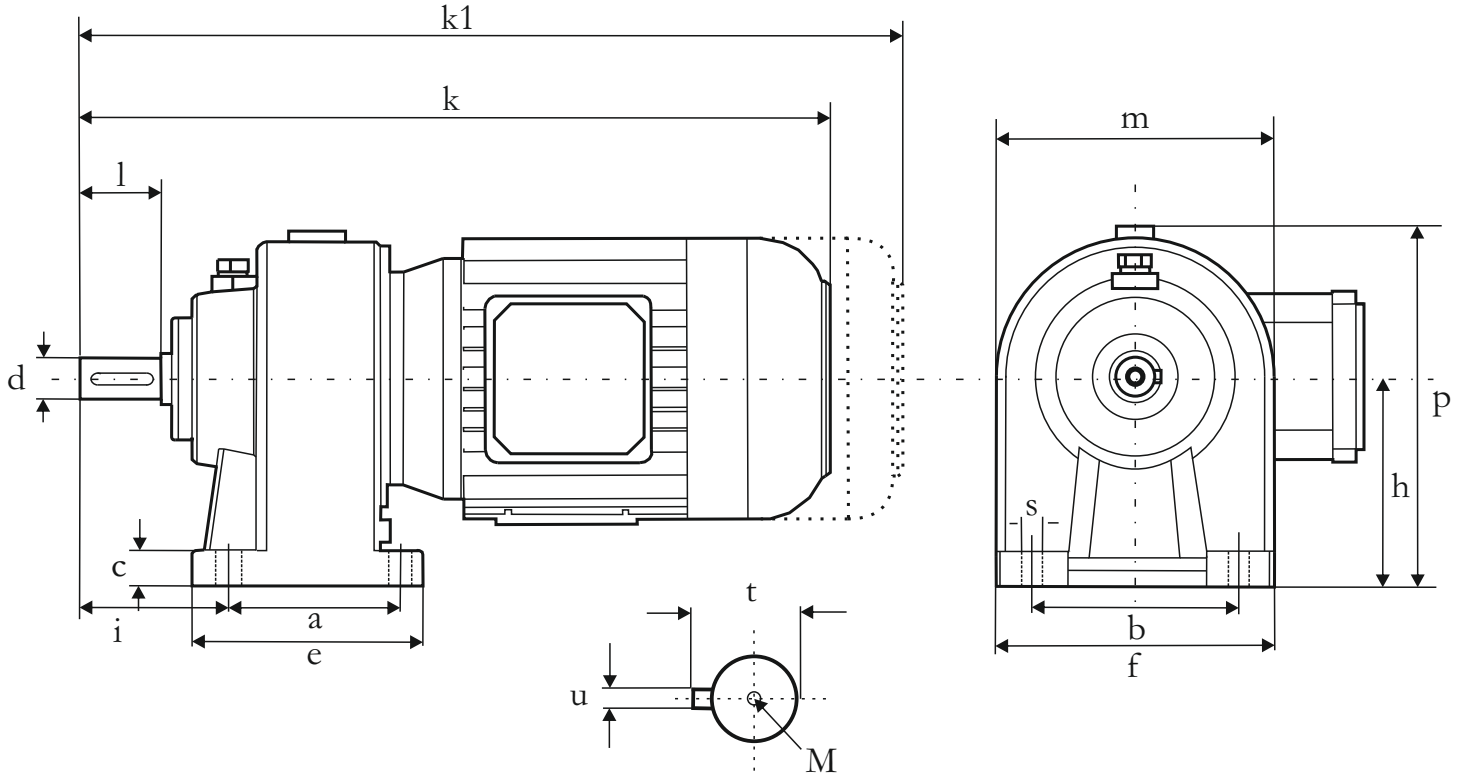
Çıkış Devir Sayısı n2
Output speed n2

	0-15	30-50	15-30	50-100	100-140
Pr (N)	8500	7800	7200	6200	5500
Pa(N)	3400	3100	2700	2300	2100

Redüktöre gelen radyal ve eksenel yükler
Radial and axial loads on the gearbox

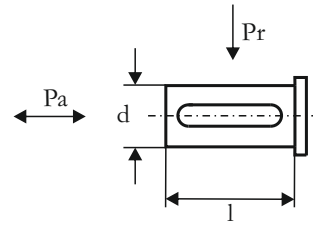
MİL ÇAP TOLERANSLARI
0-50 mm ISO K6
50mm üstü ISO J6
k1 Frenli redüktörlere aittir.

Shaft diameter tolerances
0-50 mm ISO K6
Up 50 mm ISO J6
Dimensions k1 is for motors with brake

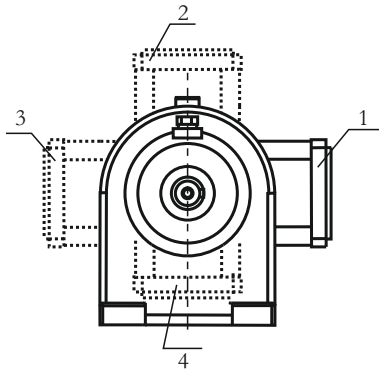


a	b	c	e	f	s	i	h	p	m	l	d	t	u	M
300	360	55	370	450	26	185	315	490	350	140	75	79,5	20	M16

	132 M	160 M	160 L	180 M	180 L	200 L	225 S	225 M
k	853	933	977	998	1036	1093	1127	1152
k1	998	1103	1147	1171	1206	1293	-	-



Klemens Kutusu Bağlantı Pozisyonları
Mounting position of terminal box



$T_2 \text{ max(Nm)} : 4000$

Yük
Load

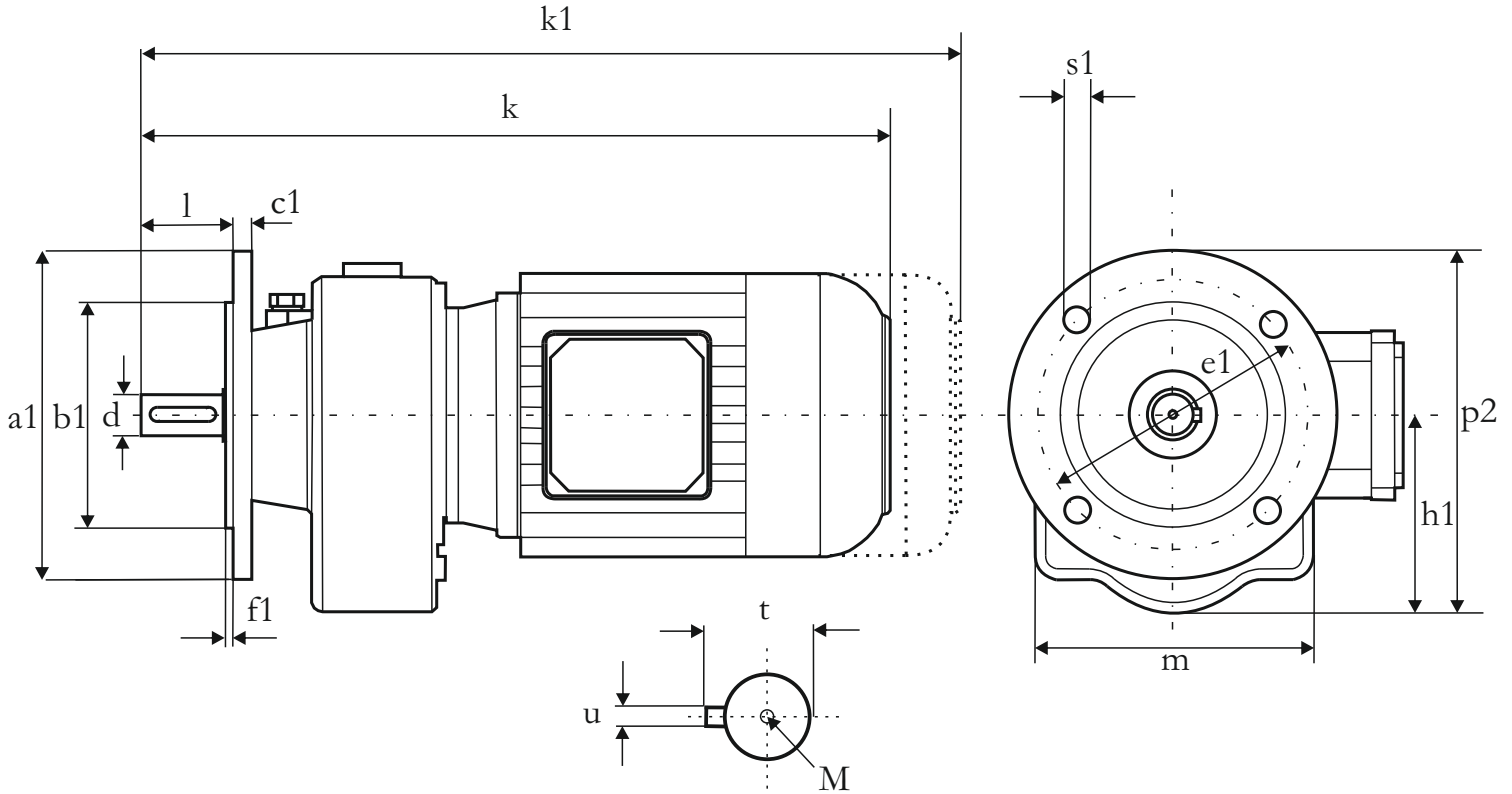
Çıkış Devir Sayısı n_2
Output speed n_2

	0-15	30-50	15-30	50-100	100-140
P_r (N)	16000	11500	10900	9000	8000
P_a (N)	5200	4500	4000	3500	2900

Redüktöre gelen radyal ve eksenel yükler
Radial and axial loads on the gearbox

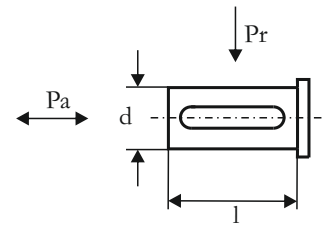
MİL ÇAP TOLERANSLARI
0-50 mm ISO K6
50mm üstü ISO J6
k1 Frenli redüktörlere aittir.

Shaft diameter tolerances
0-50 mm ISO K6
Up 50 mm ISO J6
Dimensions k1 is for motors with brake

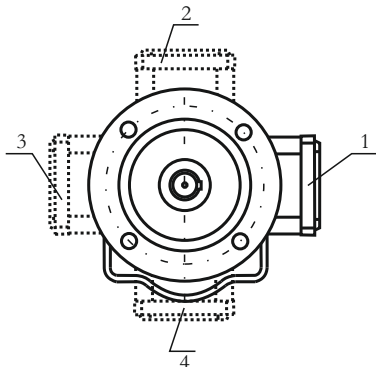


c1	h1	p2	m	l	d	t	u	M
20	300	450	350	140	75	79,5	20	M16

	132 M	160 M	160 L	180 M	180 L	200 L	225 S	225 M
k	858	933	977	998	1036	1093	1127	1152
k1	998	1103	1147	1171	1206	1293	-	
a1	300	300	300	350	350	350	350	350
b1	230	230	230	250	250	250	250	250
e1	265	265	265	300	300	300	300	300
f1	4	4	4	5	5	5	5	5
s1	14	14	14	18	18	18	18	18



Klemens Kutusu Bağlantı Pozisyonları
Mounting position of terminal box



$T_2 \max(\text{Nm}) : 4000$

Yük
Load

Çıkış Devir Sayısı n_2
Output speed n_2

	0-15	30-50	15-30	50-100	100-140
P_r (N)	16000	11500	10900	9000	8000
P_a (N)	5200	4500	4000	3500	2900

Redüktöre gelen radyal ve eksenel yükler
Radial and axial loads on the gearbox

MİL ÇAP TOLERANSLARI
0-50 mm ISO K6
50mm üstü ISO J6
 k_1 Frenli redüktörlere aittir.

Shaft diameter tolerances
0-50 mm ISO K6
 U_p 50 mm ISO J6
Dimensions k_1 is for motors with brake